



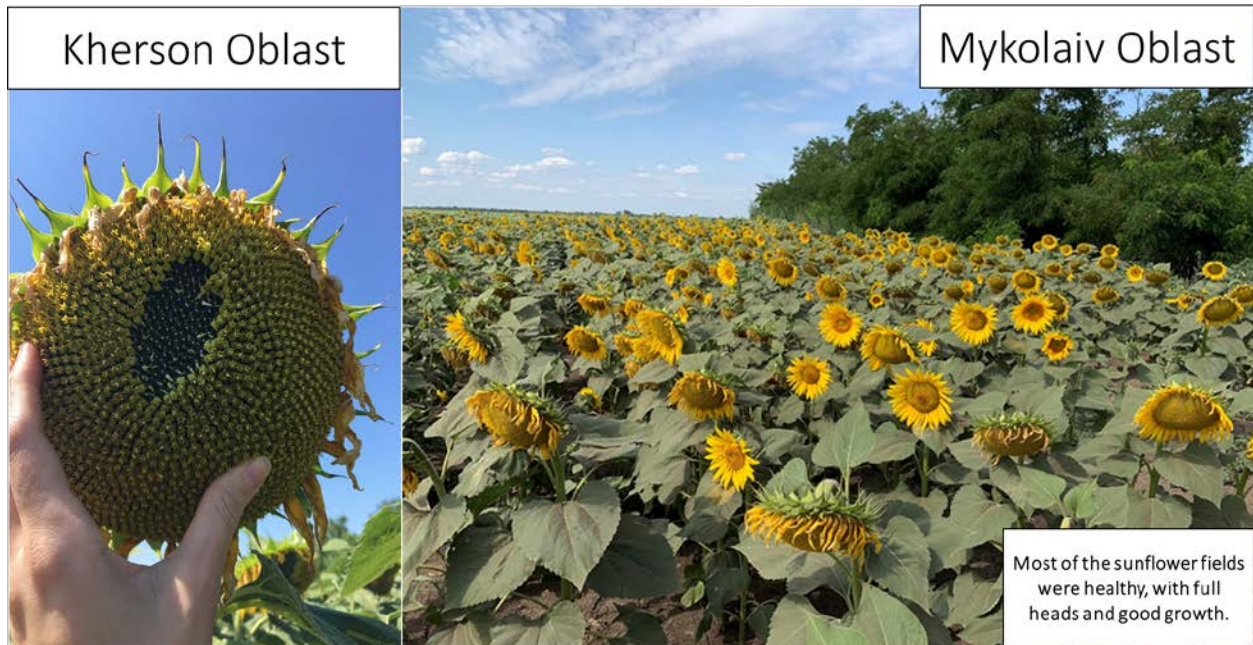
United States
Department of
Agriculture

Foreign
Agricultural
Service

Circular Series
WAP 8-19
August 2019

World Agricultural Production

Ukraine Sunflowerseed: Favorable Weather Boosts Yield to a Record



USDA Foreign Agricultural Service
Office of Global Analysis
IPA Division

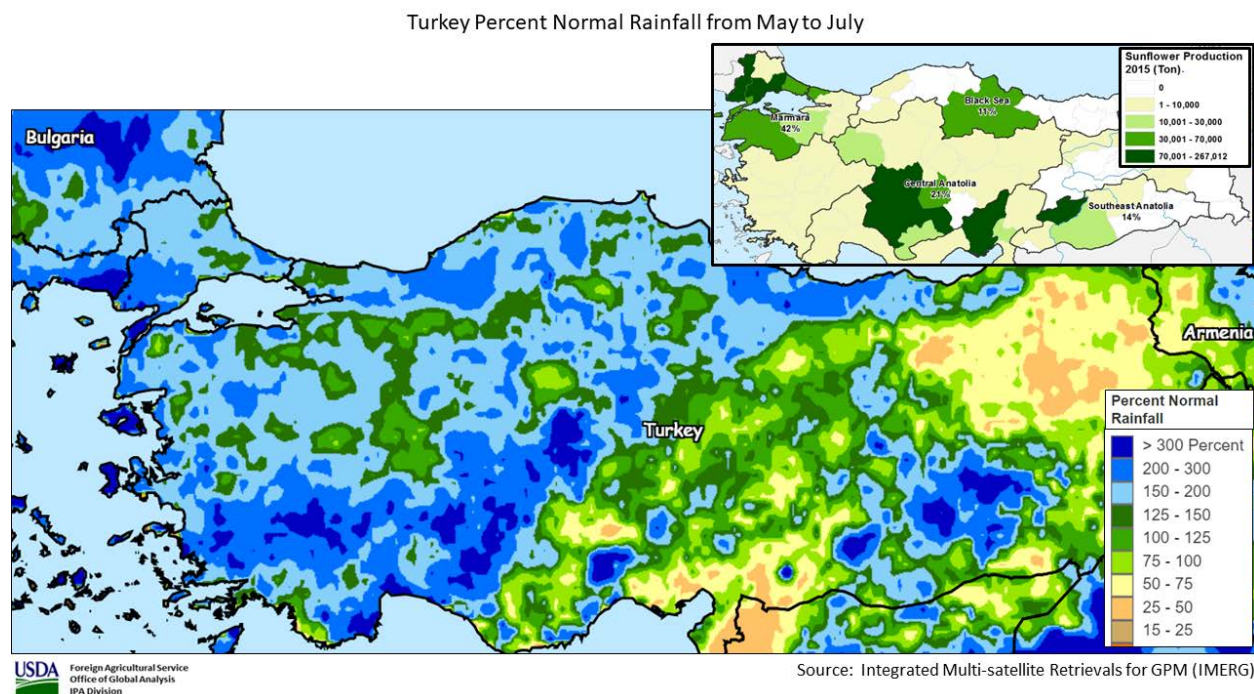
Photos courtesy of Katie McGaughey (FAS)

Ukraine sunflowerseed production for 2019/20 is forecast at 15.5 million metric tons (mmt), up 5 percent from last month and up 3 percent from last year. Yield is forecast at a record 2.50 tons per hectare, up 5 percent from last month and up 8 percent from last year. The month-to-month increase in yields is due to recent favorable weather for sunflowers in eastern and central Ukraine. Total area is estimated at 6.2 million hectares, unchanged from last month.

USDA Foreign Agricultural Service analysts conducted crop assessment travel in mid-to-late July. The team observed favorable growth for sunflowers in the Steppe and Forest-Steppe regions. The sunflower heads were larger than average and seeds fully filled out the heads. Harvest will begin in early September and continue through mid-November. USDA crop production estimates for Ukraine include estimated output from Crimea. *(For more information, please contact Katie.McGaughey@fas.usda.gov.)*

Approved by the World Agricultural Outlook Board

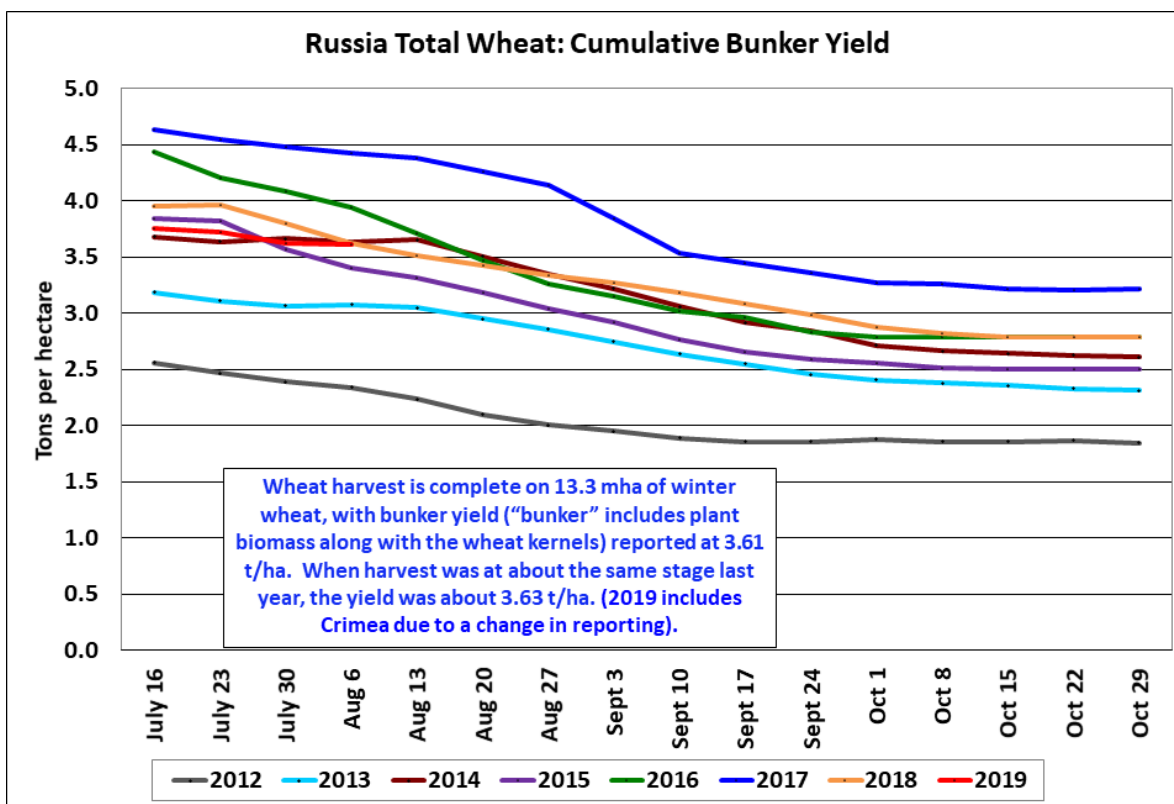
Turkey Sunflowerseed: Excellent Conditions Increase Yield Forecast



USDA forecasts 2019/20 Turkey sunflowerseed production at 1.8 million metric tons (mmt), up 0.2 mmt from last month and down slightly from last year. Area is forecast at 0.7 million hectares (mha), unchanged from last month and up just slightly from last year. Yield is forecast at 2.40 metric tons per hectare (mt/ha), up from 2.12 mt/ha last month. Growing conditions have been favorable all season. Well-timed precipitation over the sunflower growing regions has put this crop on pace for above-average yields. *(For more information, please contact William.Baker@fas.usda.gov).*

Russia Wheat: Harvest is Ongoing for Winter Wheat; Spring Wheat Conditions Have Deteriorated

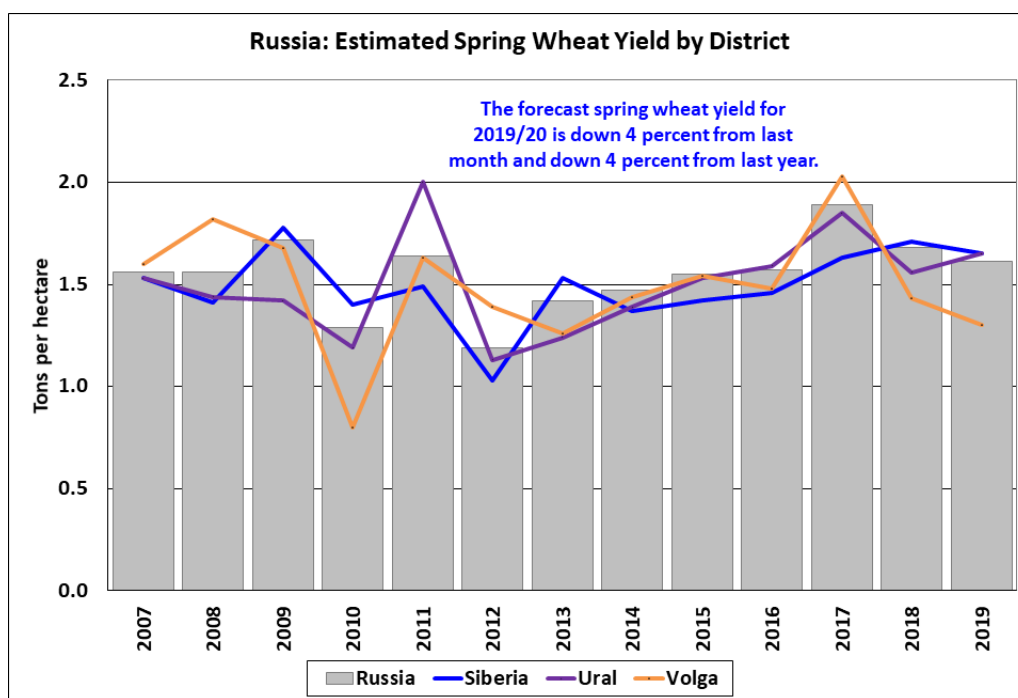
Russia wheat production for 2019/20 is estimated at 73.0 million metric tons (mmt), down 2 percent from last month, but up 2 percent from last year. The estimate includes 54.0 mmt of winter wheat and 19.0 mmt of spring wheat. USDA crop production estimates for Russia exclude estimated output from Crimea. Total wheat yield is estimated at 2.70 tons per hectare, down 4 percent from last month and down 1 percent from last year. Total area is estimated at 27.0 million hectares, up 3 percent from last month.



Source: Ministry of Agriculture

Winter wheat is grown in European Russia (including the Southern, Central, Volga, and North Caucasus Districts) and typically accounts for about half of total wheat area and 70 percent of production. Harvest is about 50 percent complete and the month-to-month decrease for winter wheat yield is based largely on harvest yield data from the Ministry of Agriculture. The winter wheat crop suffered from hot and dry weather in June that deteriorated crop conditions. Additionally, harvested area was revised upward for both winter wheat and spring wheat due to information from Rosstat, Russia’s statistical agency, on final sown area.

Spring wheat yield estimates were decreased 4 percent from last month. Average conditions in Siberia (43 percent of production) were not high enough to offset below-average conditions in parts of the Volga region that border Kazakhstan.



USDA Foreign Agricultural Service
Office of Global Analysis
IPA Division

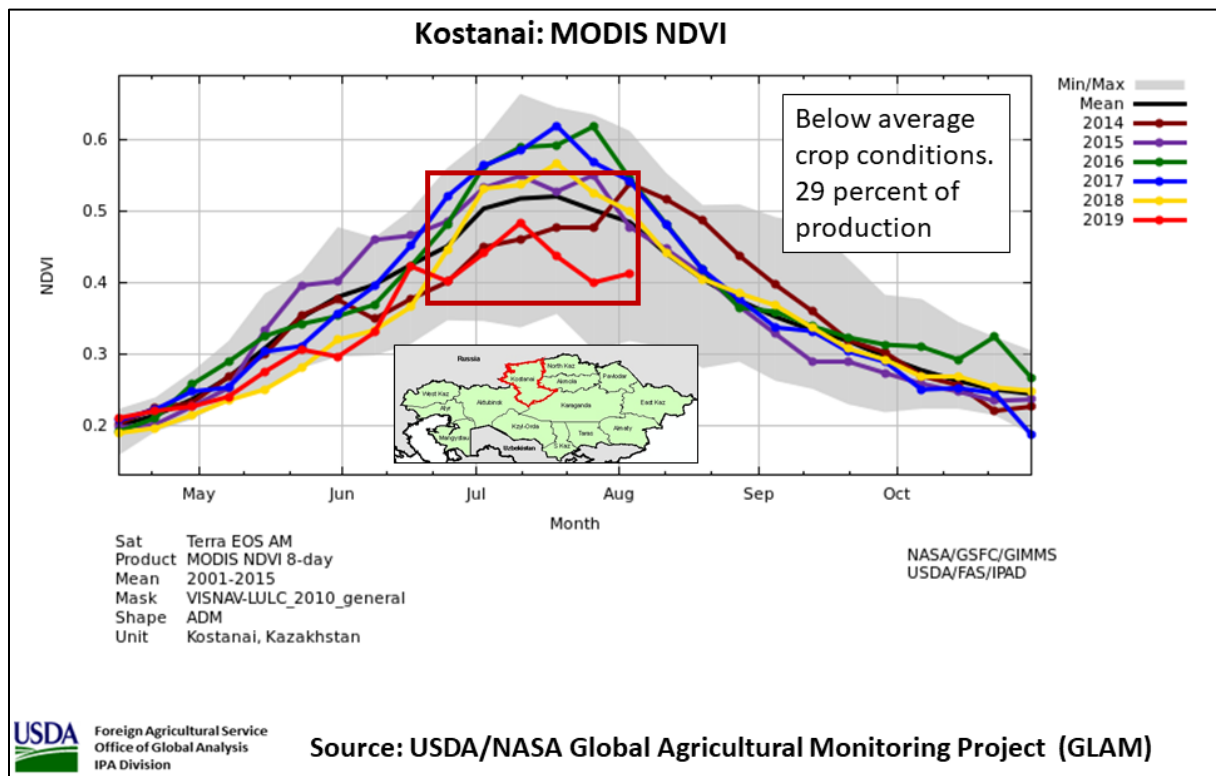
Sources: Rosstat (2007-2018), FAS Forecast (2019)

Area, yield, and production estimates for Russia winter wheat and spring wheat are available on PSD Online. Select “Downloadable Data Sets” and open the zipped file for “Russia Wheat; Winter/Spring Area & Prod.”

(For more information, please contact Katie.McGaughey@fas.usda.gov.)

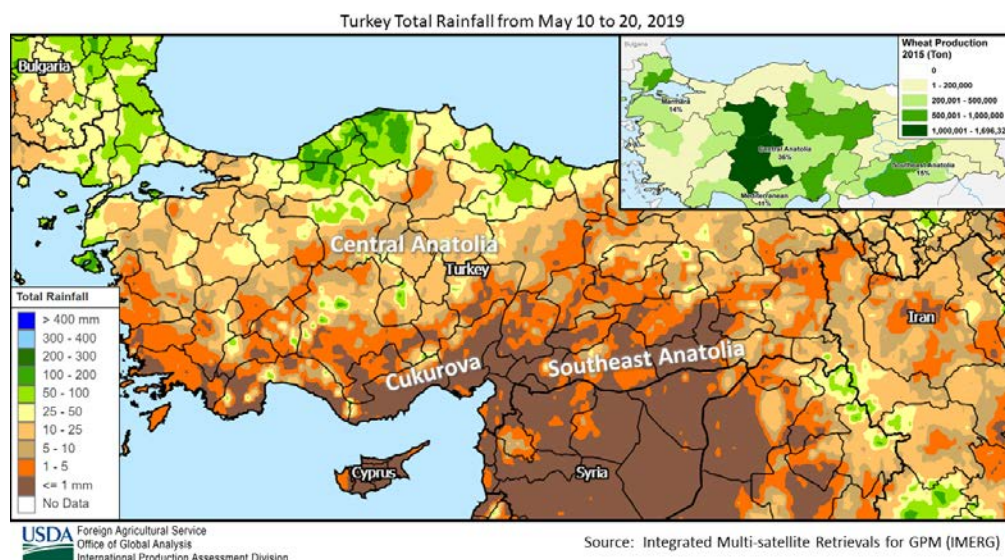
Kazakhstan Wheat: Yields Drop Due to Deteriorating Conditions in Kostanai

Kazakhstan wheat production for 2019/20 is forecast at 13.0 million metric tons (mmt), down 7 percent from last month and from last year. Yield is forecast at 1.14 tons per hectare, down 7 percent from last month and from last year. Area is estimated unchanged at 11.4 million hectares.



Kazakhstan wheat is grown mostly in Kostanai, North Kazakhstan, and Akmola (29, 28, and 28 percent of production, respectively). The month-to-month decrease in yield is driven by the declining crop conditions as seen in the Normalized Difference Vegetation Index (NDVI). The NDVI highlights significantly below-average conditions in Kostanai where conditions were hot and dry in July. Harvest will begin in September. (*For more information, please contact Katie.McGaughey@fas.usda.gov.*)

Turkey Wheat: Production Lowered due to Revisions in Area and Yield



USDA estimates 2019/20 Turkey wheat production at 19.0 million metric tons (mmt), down 2.0 mmt from last month and unchanged from last year. Area is estimated at 7.2 million hectares (mha), down 0.5 mha from last month, and down 0.4 mha from last year. Yield is estimated at 2.64 mt/ha, down 3 percent from last month. Wheat area is down from last year due to a shift to other crops. Early-season growing conditions were favorable but declined in May as dry conditions diminished yield and quality in the Southeast Anatolia, Central Anatolia, and Cukurova regions. Recent reports confirm the month-to-month reduction in yield. *(For more information, please contact William.Baker@fas.usda.gov).*

European Union Wheat: Estimated Production Down 1.3 Million Tons

European Union (EU) wheat production is estimated at 150.0 million metric tons (mmt), down 1.3 mmt (1 percent) from last month, but up 13.1 mmt (10 percent) from last year's poor harvest. Production is estimated to be slightly below the 5-year average of 150.9 mmt. Area is estimated at 26.2 million hectares (mha), down 0.3 mha from last month but 0.6 mha (2 percent) above last year. Yield is estimated at 5.74 metric tons per hectare (mt/ha), up slightly from last month, and up 7 percent from last year, and above the 5-year average of 5.69 mt/ha.

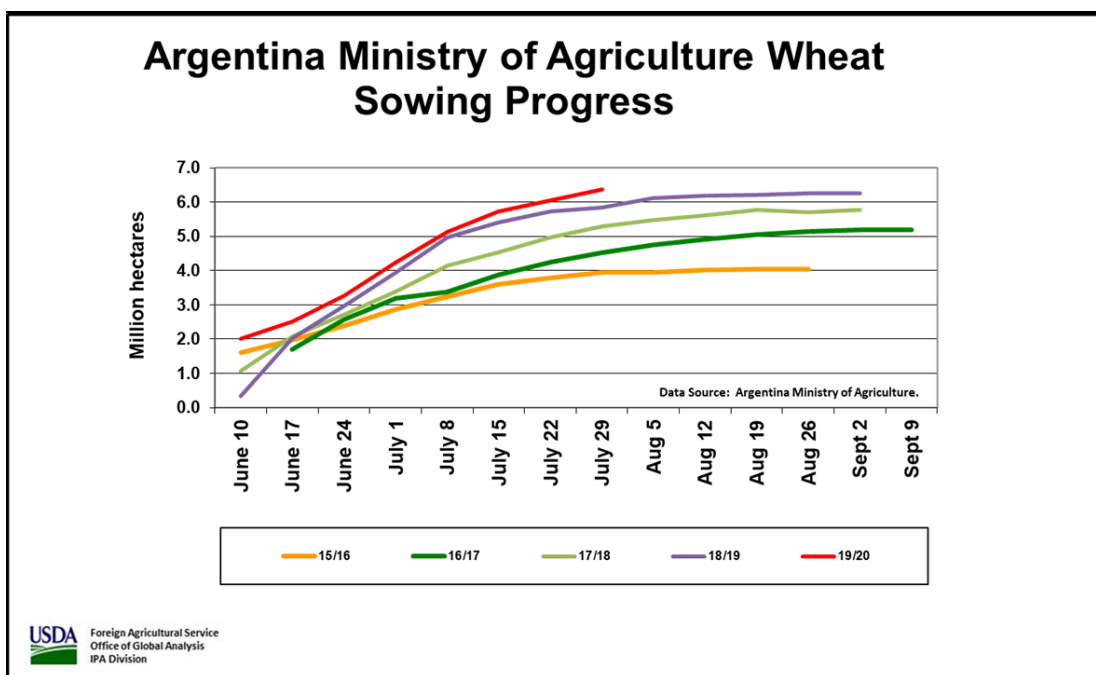


During July, FAS staff traveled in Germany, the EU's second largest wheat producer, Austria, and the Czech Republic, meeting with farmers and agricultural specialists. The wheat crop in mid-July was nearing harvest in Germany. It was already harvested in Austria and was almost finished in the Czech Republic. None of the farmers reported better-than-average wheat crops, but several well-managed farms were expecting near-average yields. Most fields, however, either had been

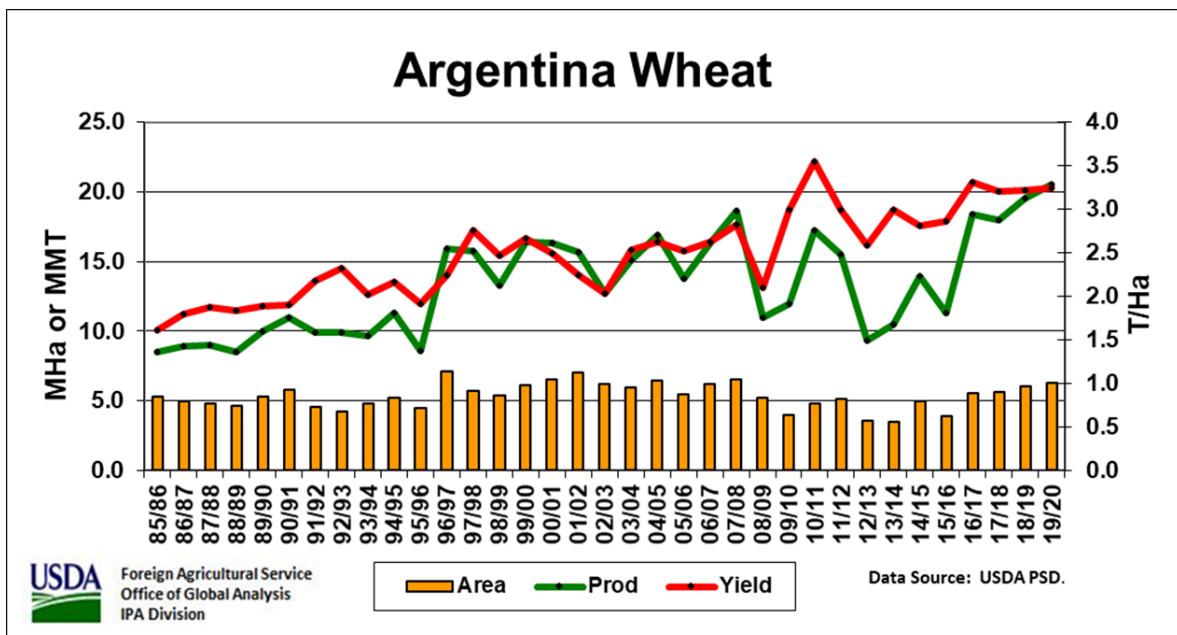
harvested with below-average yields, or were expecting yields to be below-average when the crop was to be harvested. The extreme heat at the end of June prematurely ended plant and grain development, resulting in smaller grain kernels. Drought and record heat played a significant role in the reduction. The largest reductions in production were to Spain and Italy. Meanwhile, despite some challenging conditions, the EU's largest wheat producer, France, is estimated to produce an above-average crop of 38.7 mmt. *(For more information, please contact Bryan.Purcell@fas.usda.gov.)*

For country-specific area, yield, and production estimates within the European Union (EU), please go to PSD Online at <https://apps.fas.usda.gov/PSDOnline/app/index.html#/app/home>, and select "Downloadable Data Sets." Select the zipped file for "EU Countries Area & Production."

Argentina Wheat: Forecast Area Highest Since 2004/05



USDA forecasts 2019/20 Argentina wheat production at 20.5 million metric tons, up 3 percent from last month and up 5 percent from last year. Harvested area is forecast at 6.3 million hectares, up nearly 2 percent from last month and up 4 percent over last year. The increased wheat area is due to higher prices and excellent planting conditions.



Yield is forecast at 3.25 tons per hectare, up nearly 1 percent from last month, up 1 percent from last year and up 6 percent from the 5-year average. Planting began in mid-May and finished the first week of August. This year wheat planting was faster than the last several years. (For additional information, please contact Denise.McWilliams@usda.gov.)

European Union Rapeseed: Estimated Production Down 0.7 Million Tons from Last Month

European Union (EU) rapeseed production is estimated at 18.0 million metric tons (mmt), down 0.7 mmt (4 percent) from last month, down 2.1 mmt (10 percent) from last year, and below the 5-year average of 22.0 mmt. Area is estimated at 5.7 million hectares (mha), down 0.1 mha (2 percent) from last month, and down 1.4 mha (20 percent) from last year. The 5-year average area is 6.7 mha. Yield is estimated at 3.19 metric tons per hectare (mt/ha), down 2 percent from last month, but up 12 percent from last year. The 5-year average yield is 3.28 mt/ha.

Rapeseed in Germany showing effects of drought and heat



Shorter plants



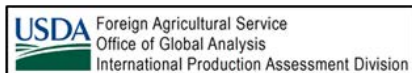
Smaller seeds



Fewer side branches



Fewer seeds

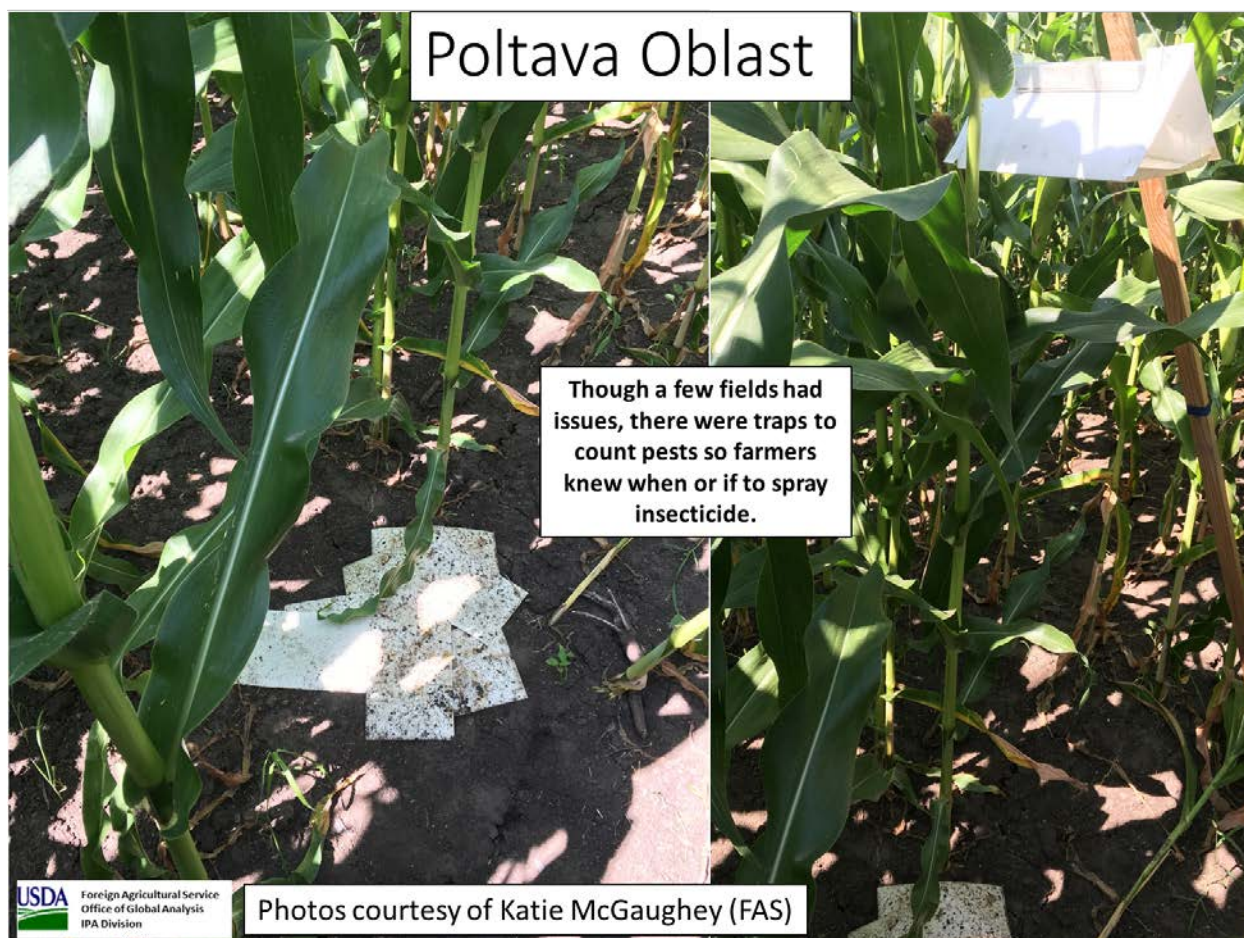


Saxony Anhalt, Germany – July 16, 2019
Photos courtesy of Bryan Purcell (FAS)

Harvesting should now be complete in Europe as planting for next year's rapeseed crop begins in mid-August. During July, staff from FAS Washington and Berlin traveled in Germany, the EU's second largest rapeseed producer, meeting with farmers and agricultural specialists. The crop in mid-July was a week from harvest and evident that production was going to be subpar. Dryness and extreme heat had prevented proper plant development. The plants were shorter than normal and many of the secondary branches were missing. Pods and seeds were smaller and fewer than normal. Farmers expressed disappointment with rapeseed due to low prices and poor performance in the last several years. Additionally, the neonicotinoid ban has allowed pest populations to increase. There are few choices for alternative winter crops. Much of northern and central Europe is struggling with these same rapeseed issues. The largest reduction occurred in France (0.5 mmt). *(For more information, please contact Bryan.Purcell@fas.usda.gov.)*

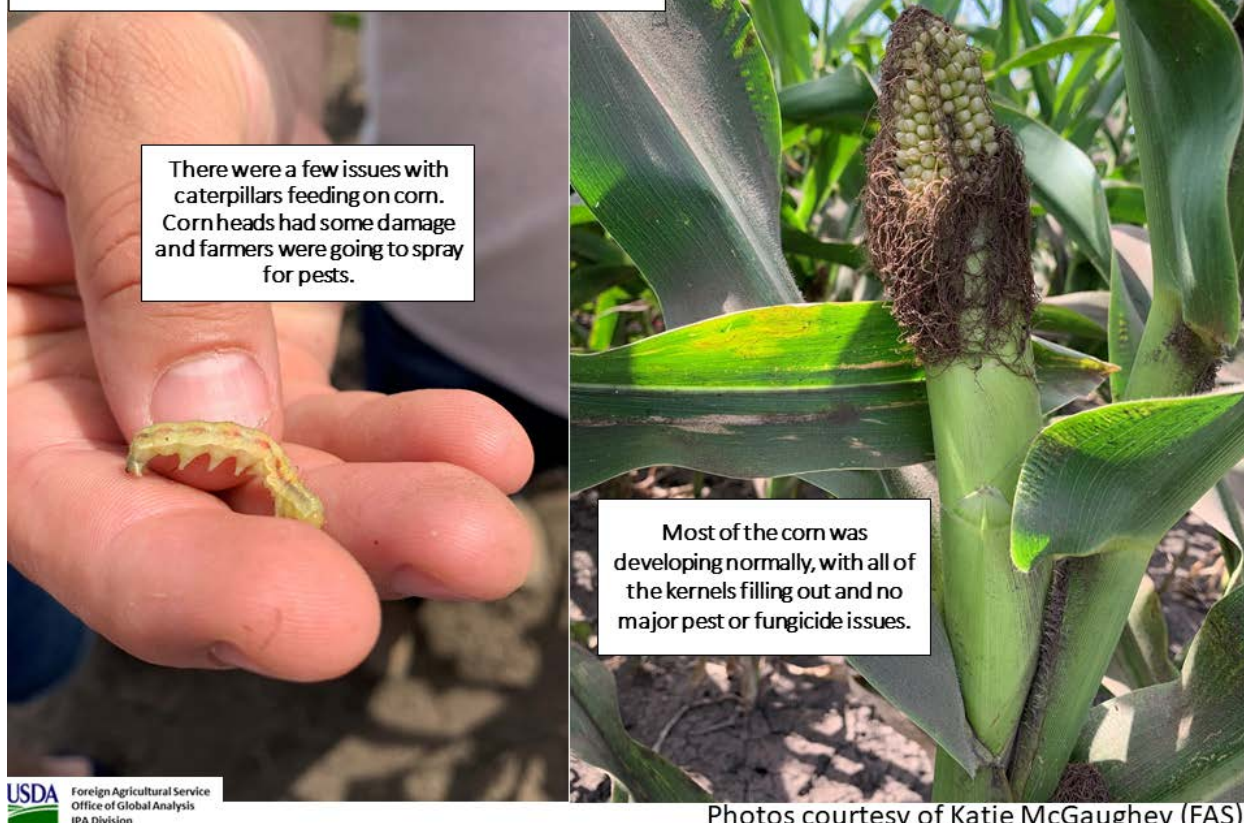
For country-specific area, yield, and production estimates within the European Union (EU), please go to PSD Online at <https://apps.fas.usda.gov/PSDOnline/app/index.html#/app/home>, and select "Downloadable Data Sets." Select the zipped file for "EU Countries Area & Production."

Ukraine Corn: Record Production Driven by Higher Sown Area and Near Record Yields



Ukraine corn production for 2019/20 is forecast at 36.5 million metric tons (mmt), up 7 percent from last month and up 2 percent from last year. Yield is forecast at 7.45 tons per hectare, up 3 percent from last month, but down 5 percent from last year's record. The estimated harvested area was increased slightly to 4.9 million hectares (mha) from 4.7 mha based on final sown area data released by the State Statistical Service of Ukraine.

Mykolaiv Oblast



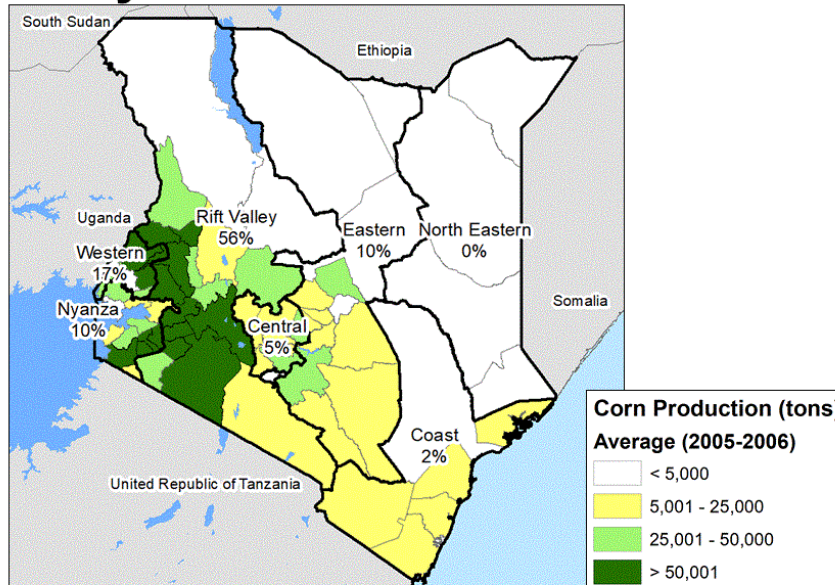
Photos courtesy of Katie McGaughey (FAS)

USDA Foreign Agricultural Service analysts conducted crop assessment travel in mid-to-late July. The month-to-month increase in yields is due to recent favorable weather observed for corn in eastern and central Ukraine though not on the same scale as last year which is Ukraine's current corn yield record. The team also observed favorable growth for corn ears, which were filled out with little to no issues. There were some fields in Poltava and Mykolaiv with pests but farmers were also on track to spray (which is the norm for this time of year). Harvest will begin in early September. *(For more information, please contact Katie.McGaughey@fas.usda.gov.)*

Kenya Corn: Production Down from Last Year Due to Early Season Drought

Kenya corn production for 2019/20 is estimated at 3.2 million metric tons (mmt), unchanged from last month, but down 0.4 mmt (10 percent) from the 5-year average and down 0.8 mmt (20 percent) from last year. Area is estimated at 2.0 million hectares (mha), unchanged from last month, but down 0.17 mha (8 percent) from the 5-year average and down 0.2 mha (9 percent) from last year. Yield is estimated at 1.6 metric tons per hectare, unchanged from last month, but down 3 percent from the 5-year average and down 12 percent from last year. Estimated corn area and yields are below the 5-year average due to an early season drought from March through May.

Kenya Corn Production

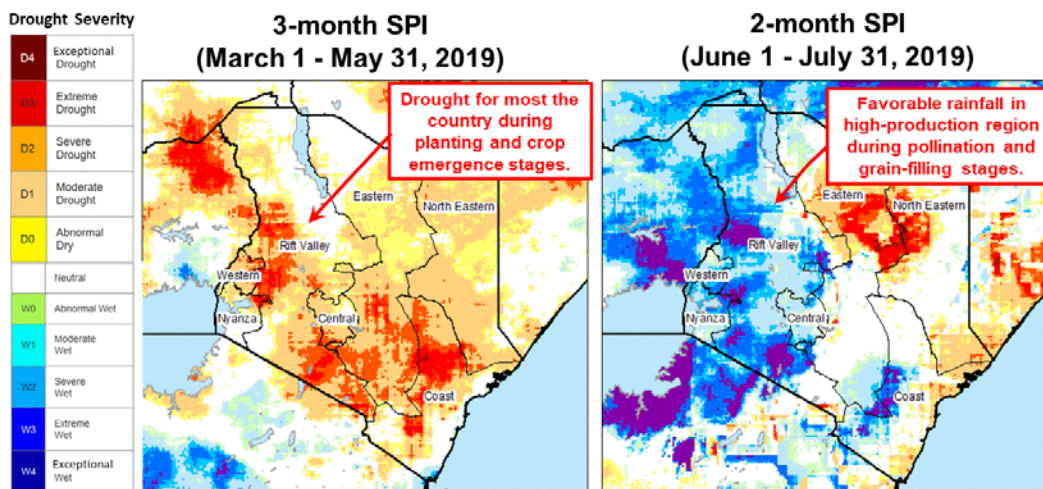


USDA Foreign Agricultural Service
Office of Global Analysis
International Production
Assessment Division

Data Source: District and province production data from the Kenya Ministry of Agriculture. Province percentage values indicate percent production of average production during the 2004-2008 seasons.

The long-rains season in Kenya’s high production region begins in March and ends in September, with harvest ranging from October through December. The long-rains harvest contributes to over 80 percent of the national corn output. The 2019 long-rains season in Kenya was characterized by late onset of rains and prolonged dryness from March through May which delayed planting operations, caused poor germination, and stressed early planted crops. Above-average rains returned on June 1st and most water-stressed crops were able to recover in the high production areas where harvest begins in October. Harvest prospects in the highland areas are near-average, after the favorable June and July rains improved crop conditions. Harvest for the lowland marginal areas started in July and the expected lowland harvest is below-average.

Drought Severity Measured by the Standardized Precipitation Index (SPI)



USDA Foreign Agricultural Service
Office of Global Analysis
International Production Assessment Division

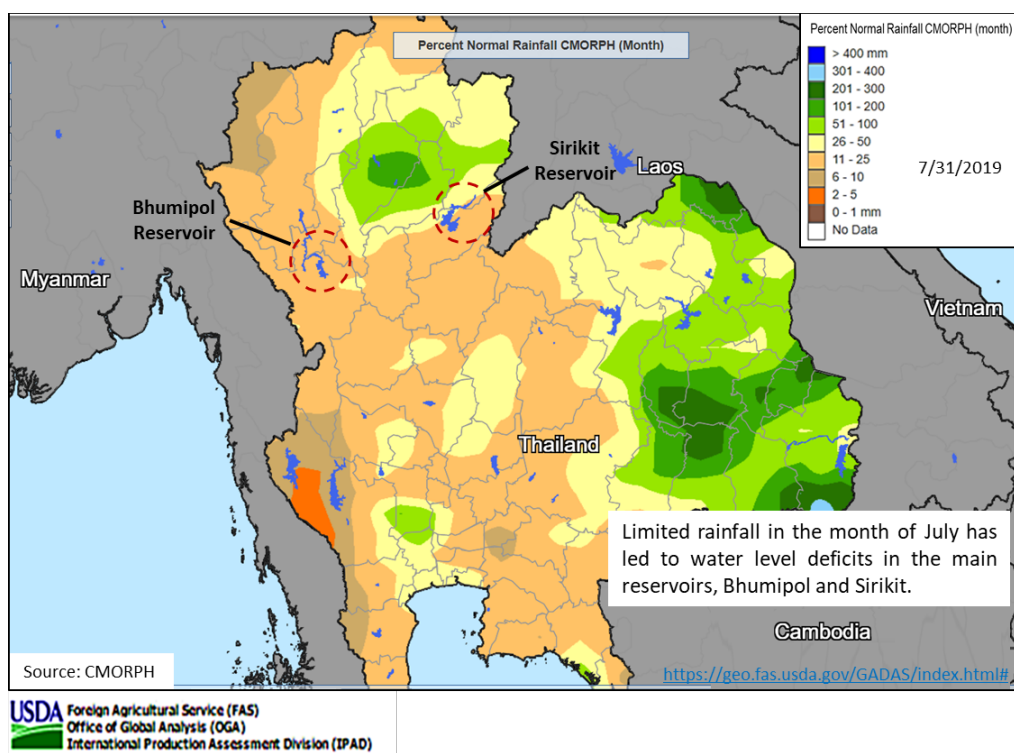
Source: SPI-CHIRPS from the University of California-Santa Barbara
<http://chg.geog.ucsb.edu/data/chirps/>

The short-rains season begins in October and ends in mid-January, with the harvest ranging from late January through February in the major short-rains producing districts of Eastern, Central, Nyanza and Coast provinces. (For more information, contact Curt.Reynolds@fas.usda.gov.)

Thailand Rice: Forecast Production Decreases as Dryness Reduces Area

USDA forecasts rice harvested area at 10.9 million hectares, down 1 percent from last month, but on-par with last year. Yield is forecast at 2.85 million tons per hectare, down 1 percent from last month and down slightly from last year. USDA forecasts Thailand 2019/20 rice production at 20.5 million metric tons (milled basis), down 2 percent from last month, but up slightly from last year.

The month-to-month reduced production stems from an area decline as insufficient precipitation in the month of July led to below-average water levels in the top two reservoirs, Bhumipol and Sirikit, located in Thailand’s North region. These reservoirs are essential for the dryland cultivated rice crop – predominantly irrigated – as the reservoirs provide approximately 80 percent of the irrigation water supply to rice area in the lower North and Central Plains regions. Bhumipol and Sirikit reservoir levels are down significantly year-to-year. According to the Thailand Royal Irrigation Department as of August 7, 2019, Bhumipol and Sirikit reservoir levels are down 44 percent and 47 percent, respectively from last year. With dryland rice cultivation set to start in November and the rainy season ending, reservoir recharge to adequate water levels are less likely to benefit cultivation for the dry season crop.

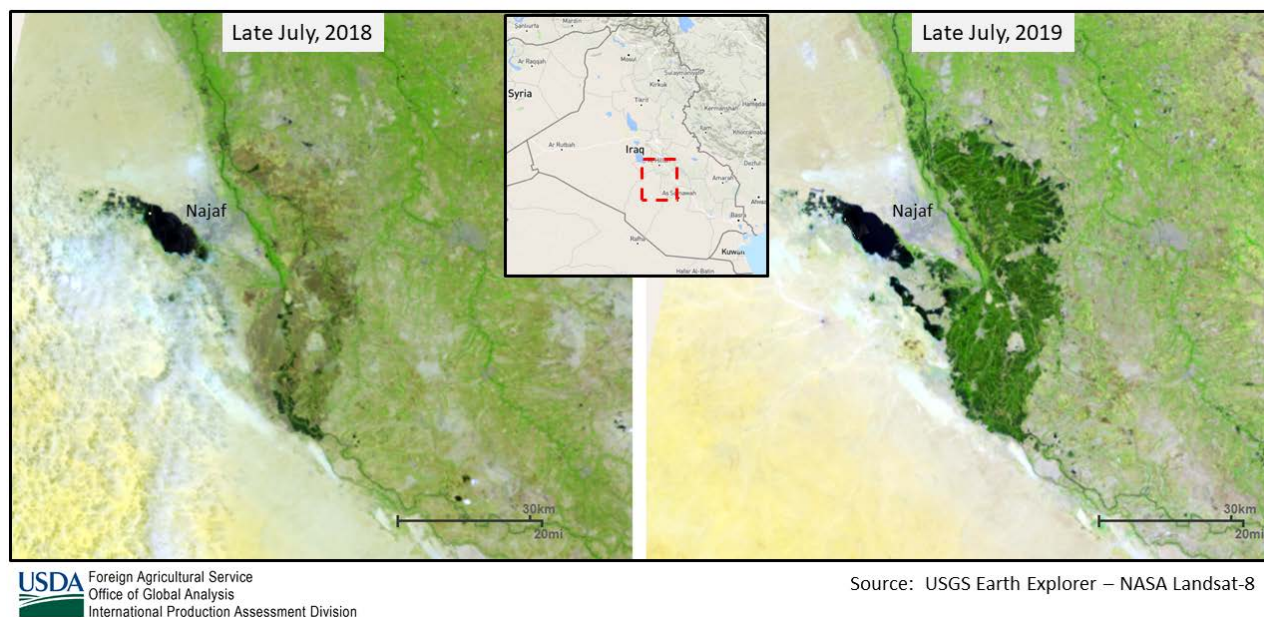


Thailand rice is cultivated in three cycles: wet cycle (main) from May to January, late-wet cycle from November to April, and dry cycle November to July. Aggregate rice production for the wet cycle represents 75 percent of total production. (For more information please contact Justin.Jenkins@fas.usda.gov.)

Iraq Rice: Crop Bounces Back from Restricted Area Last Year

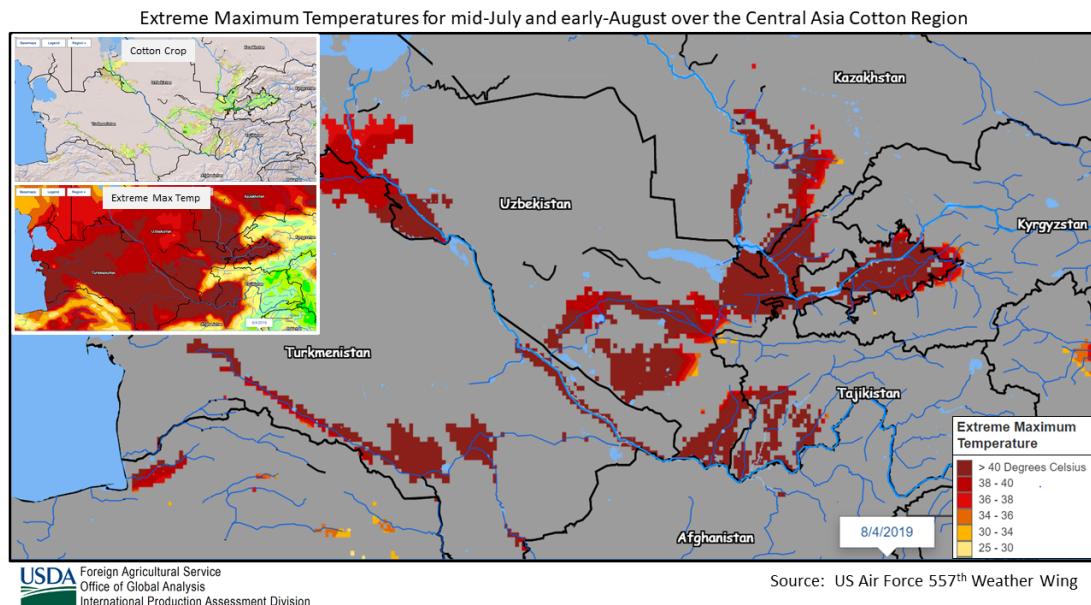
USDA forecasts 2019/20 Iraq rough rice production at 450,000 metric tons (mt), up 390,000 mt from last month, and up 420,000 mt from last year. Area is forecast at 95,000 hectares (ha), up 79,000 ha from last month, and up 87,000 ha from last year's restricted area of 8,000 ha. Yield is forecast at 4.74 tons per hectare. Low flow in the Euphrates River in the spring and summer of 2018 forced the Government of Iraq to severely restrict rice planted area. The rice crop for 2018/19 was almost nonexistent as a result.

Late July 2018 and 2019 Satellite Image Comparison of Iraq Rice Growing Area Near the City of Najaf on the Euphrates River



In 2019, the snow pack in the mountainous area in Turkey, which accounts for 95 percent of the runoff into the Euphrates River, was above normal. Above normal spring precipitation across northern and central Iraq increased water for irrigation. Landsat satellite imagery comparing last year to this year over Najaf shows a strong contrast when comparing last year's restricted crop area to this year. With good soil moisture conditions and ample irrigation resources, Iraq rice farmers are taking full advantage of the opportunity to make up for last year's reduced crop. Recent reports confirm the month-to-month increase in rice area. (*For more information, please contact William.Baker@fas.usda.gov*).

Uzbekistan Cotton: Yield Forecast Lowered Due to Extreme Heat



USDA forecasts Uzbekistan 2019/20 cotton production at 3.0 million 480-lb bales, down 0.3 million bales from last month and last year. Area is forecast at 1.1 million hectares (mha), unchanged from last month and just slightly down from last year. Yield is forecast at 622 kilograms per hectare (kg/ha), down 8 percent from last month. Extremely hot and dry weather from mid-July until early August has been detrimental to the crop. Extended temperatures as high as 42 degrees Celsius occurred at peak flowering, breaking records across Uzbekistan and negatively impacting yields. (For more information, please contact William.Baker@fas.usda.gov.)



World Agricultural Production
U.S. Department of Agriculture
 Foreign Agricultural Service / Office of Global Analysis
 International Production Assessment Division (IPAD)
 Ag Box 1051, Room 4630, South Building
 Washington, DC 20250-1051

<https://ipad.fas.usda.gov/>

Telephone: (202) 720-1662 Fax: (202) 720-1158

This report uses information from the Foreign Agricultural Service’s (FAS) global network of agricultural attachés and counselors, official statistics of foreign governments and other foreign source materials, and the analysis of economic data and satellite imagery. Estimates of foreign area, yield, and production are from the International Production Assessment Division, FAS, and are reviewed by USDA’s Inter-Agency Commodity Estimates Committee. Estimates of U.S. area, yield, and production are from USDA’s National Agricultural Statistics Service. Numbers within the report may not add to totals because of rounding. This report reflects official USDA estimates released in the World Agricultural Supply and Demand Estimates (WASDE-584), August 12, 2019.

Printed copies are available from the National Technical Information Service. Download an order form at http://www.ntis.gov/products/specialty/usda/fas_a-g.asp, or call NTIS at 1-800-363-2068.

The FAS International Production Assessment Division prepared this report. The next issue of World Agricultural Production will be released after 12:00 p.m. Eastern Time, September 12, 2019.

Conversion Table

Metric tons to bushels

Wheat, soybeans	=	MT * 36.7437
Corn, sorghum, rye	=	MT * 39.36825
Barley	=	MT * 45.929625
Oats	=	MT * 68.894438

Metric tons to 480-lb bales

Cotton	=	MT * 4.592917
--------	---	---------------

Metric tons to hundredweight

Rice	=	MT * 22.04622
------	---	---------------

Area & weight

1 hectare	=	2.471044 acres
1 kilogram	=	2.204622 pounds



For further information, contact:
U.S. Department of Agriculture
Foreign Agricultural Service
Office of Global Analysis
International Production Assessment Division
Ag Box 1051, Room 4630, South Building
Washington, DC 20250-1051

Telephone: (202) 720-1662

Fax: (202) 720-1158

GENERAL INFORMATION

Director	Ronald Frantz	202-720-4056	ronald.frantz@fas.usda.gov
Deputy Director	Robert Tetrault	202-720-1071	robert.tetrault@fas.usda.gov
Administrative Assistant	Vacant		
USDA Remote Sensing Advisor	Glenn Bethel	202-720-1280	glenn.bethel@fas.usda.gov
Sr. Analyst/Technical Lead	Curt Reynolds, Ph.D.	202-690-0134	curt.reynolds@fas.usda.gov
Sr. Analyst/ Satellite Imagery	Dath Mita, Ph.D.	202-720-7339	dath.mita@fas.usda.gov
Archives Manager/Technical Lead			
Sr. Analyst/ Global Special	Jim Crutchfield	202-690-0135	james.crutchfield@fas.usda.gov
Projects Manager/Technical Lead			
Sr. Analyst/Technical Lead	Vacant		
GIS Mapping/Imagery Specialist	Lisa Colson	202-720-6652	lisa.colson@fas.usda.gov
WAP Coordinator	Ifeoma Collins	202-720-0240	ifeoma.collins@usda.gov

COUNTRY- AND REGION-SPECIFIC INFORMATION

South America, Argentina, Venezuela, and Colombia	Denise McWilliams, Ph.D.	202-720-0107	denise.mcwilliams@fas.usda.gov
Western and Central Europe, and North Africa	Bryan Purcell	202-690-0138	bryan.purcell@fas.usda.gov
Russia, Ukraine, Kazakhstan	Katie McGaughey	202-720-9210	katie.mcgaughey@fas.usda.gov
South Asia, Sri Lanka	Arnella Trent	202-720-0881	arnella.trent@fas.usda.gov
Bangladesh, India, and Nepal			
East Asia, China, and Japan	Dath Mita, Ph.D.	202-720-7339	dath.mita@fas.usda.gov
Sub-Saharan Africa,	Curt Reynolds, Ph.D.	202-690-0134	curt.reynolds@fas.usda.gov
Nigeria and South Africa			
S.E. Asia, Indonesia, Thailand, Malaysia, Cambodia and Vietnam	Justin Jenkins	202-720-0419	justin.jenkins@fas.usda.gov
Central America, Mexico, and Western United States	Ifeoma Collins	202-720-0240	ifeoma.collins@usda.gov
Australia, New Zealand, Pakistan	Jim Crutchfield	202-690-0135	james.crutchfield@fas.usda.gov
Papua New Guinea and South Pacific Islands			
Middle East, Central Asia, Afghanistan	Bill Baker, Ph.D.	202-260-8109	william.baker@fas.usda.gov
Iraq, Iran, and Syria			
Canada, Caribbean,	Vacant		
Eastern United States			
Brazil	Maria Anulacion	202-720-6878	maria.anulacion@fas.usda.gov



The Foreign Agricultural Service (FAS) updates its production, supply and distribution (PSD) database for cotton, oilseeds, and grains at 12:00 p.m. on the day the *World Agricultural Supply and Demand Estimates* (WASDE) report is released. This circular is released by 12:15 p.m.

FAS Reports and Databases:

Current *World Market and Trade and World Agricultural Production* Reports (Please see Data Publications):

<https://apps.fas.usda.gov/psdonline/app/index.html#/app/home>

Archives *World Market and Trade and World Agricultural Production* Reports:

https://usda.library.cornell.edu/catalog?utf8=%E2%9C%93&search_field=all_fields&q=world+agricultural+production

Production, Supply and Distribution Database (PSD Online):

<http://apps.fas.usda.gov/psdonline/psdHome.aspx>

EU Countries Area and Production (Please see Downloadable Data Sets):

<https://apps.fas.usda.gov/psdonline/app/index.html#/app/home>

Russia Wheat, Winter/Spring Area and Production (Please see Downloadable Data Sets):

<https://apps.fas.usda.gov/psdonline/app/index.html#/app/home>

Global Agricultural Trade System (U.S. Exports and Imports):

<http://apps.fas.usda.gov/gats/default.aspx>

Export Sales Report:

<http://apps.fas.usda.gov/esrquery/>

Global Agricultural Information Network (Agricultural Attaché Reports):

<http://gain.fas.usda.gov/Pages/Default.aspx>

Other USDA Reports:

World Agricultural Supply and Demand Estimates (WASDE):

<http://www.usda.gov/oce/commodity/wasde/>

Economic Research Service:

<http://www.ers.usda.gov/topics/crops>

National Agricultural Statistics Service:

<http://www.nass.usda.gov/Publications/>

Table 01 World Crop Production Summary

Million Metric Tons

Commodity	World	Total Foreign	North America			Former Soviet		European	Asia (WAP)					South America		Selected Other			All Others	
			United States	Canada	Mexico	Russia	Ukraine		China	India	Indonesia	Pakistan	Thailand	Argentina	Brazil	Australia	South Africa	Turkey		
			-	-	-	-	-		-	-	-	-	-	-	-	-	-	-		-
---Million metric tons---																				
Wheat																				
2017/18	761.9	714.5	47.4	30.0	3.5	85.2	27.0	nr	134.3	98.5	0.0	26.6	0.0	18.5	4.3	20.9	1.5	21.0	243.2	
2018/19 prel.	730.5	679.3	51.3	31.8	3.0	71.7	25.1	nr	131.4	99.9	0.0	25.1	0.0	19.5	5.4	17.3	1.9	19.0	228.2	
2019/20 proj.																				
Jul	771.5	719.2	52.3	33.3	3.2	74.2	29.0	nr	132.0	101.2	0.0	25.6	0.0	20.0	5.3	21.0	1.9	21.0	251.5	
Aug	768.1	714.2	53.9	33.3	3.2	73.0	29.2	nr	132.0	101.2	0.0	25.6	0.0	20.5	5.3	21.0	1.9	19.0	249.0	
Coarse Grains																				
2017/18	1,359.9	975.5	384.4	26.2	33.2	41.7	34.1	nr	266.8	46.9	11.9	6.2	5.1	39.3	85.1	12.2	13.6	12.3	340.9	
2018/19 prel.	1,396.3	1,016.3	379.9	26.2	32.5	35.0	44.5	nr	265.4	43.4	12.0	6.6	5.5	59.2	104.3	10.9	12.1	13.3	345.5	
2019/20 proj.																				
Jul	1,395.5	1,030.4	365.1	29.2	33.1	38.8	43.6	nr	262.5	46.4	13.3	6.6	5.5	57.3	104.5	12.7	14.6	14.6	347.9	
Aug	1,398.8	1,031.9	366.9	29.2	33.1	37.9	46.2	nr	262.5	45.9	12.7	6.6	5.3	58.1	104.5	12.7	14.6	14.3	348.5	
Rice, Milled																				
2017/18	494.9	489.2	5.7	0.0	0.2	0.6	0.0	nr	148.9	112.8	37.0	7.5	20.6	0.9	8.2	0.5	0.0	0.5	151.6	
2018/19 prel.	498.6	491.5	7.1	0.0	0.2	0.7	0.0	nr	148.5	115.6	36.7	7.4	20.6	0.8	7.3	0.0	0.0	0.6	153.1	
2019/20 proj.																				
Jul	497.8	491.2	6.6	0.0	0.2	0.7	0.0	nr	146.0	115.0	37.4	7.5	20.9	0.8	7.2	0.1	0.0	0.6	154.8	
Aug	497.9	491.3	6.5	0.0	0.2	0.7	0.0	nr	146.0	115.0	37.4	7.5	20.5	0.8	7.2	0.1	0.0	0.6	155.3	
Total Grains																				
2017/18	2,616.6	2,179.2	437.4	56.2	36.9	127.5	61.1	nr	550.0	258.2	48.9	40.3	25.6	58.7	97.5	33.6	15.1	33.8	735.6	
2018/19 prel.	2,625.4	2,187.1	438.3	58.0	35.7	107.4	69.6	nr	545.3	258.9	48.7	39.1	26.0	79.5	117.0	28.3	14.0	32.9	726.8	
2019/20 proj.																				
Jul	2,664.8	2,240.7	424.0	62.5	36.5	113.7	72.6	nr	540.5	262.6	50.7	39.7	26.4	78.0	117.0	33.8	16.5	36.2	754.2	
Aug	2,664.8	2,237.4	427.3	62.5	36.5	111.6	75.4	nr	540.5	262.1	50.1	39.7	25.8	79.3	117.0	33.8	16.5	33.9	752.8	
Oilseeds																				
2017/18	580.7	449.2	131.5	29.1	1.3	15.5	19.8	nr	59.5	35.4	13.8	4.0	1.0	42.5	125.8	5.4	2.6	3.2	90.4	
2018/19 prel.	602.3	468.4	133.9	28.5	1.2	18.7	22.3	nr	59.9	36.5	14.1	3.8	1.0	61.6	121.9	3.0	1.9	3.5	90.6	
2019/20 proj.																				
Jul	586.0	470.1	115.9	26.3	1.3	18.3	22.5	nr	61.7	37.6	14.4	4.0	1.1	58.4	127.7	3.3	2.4	3.3	87.8	
Aug	580.9	469.4	111.5	26.3	1.3	19.4	22.5	nr	61.7	36.5	14.4	3.9	1.1	58.4	127.7	3.3	2.4	3.5	87.0	
Cotton																				
2017/18	123.8	102.9	20.9	0.0	1.6	0.0	0.0	1.5	27.5	29.0	0.0	8.2	0.0	0.8	9.2	4.8	0.2	4.0	16.1	
2018/19 prel.	119.2	100.8	18.4	0.0	1.7	0.0	0.0	1.7	27.8	26.5	0.0	7.6	0.0	1.1	12.8	2.4	0.2	3.7	15.3	
2019/20 proj.																				
Jul	125.8	103.8	22.0	0.0	1.8	0.0	0.0	1.8	27.8	29.0	0.0	8.0	0.0	1.1	12.0	1.9	0.2	4.1	16.2	
Aug	125.6	103.1	22.5	0.0	1.7	0.0	0.0	1.7	27.8	29.0	0.0	8.0	0.0	1.0	12.0	1.9	0.2	4.1	15.7	

1/ Includes wheat, coarse grains, and rice (milled) shown above.

Table 02 Wheat Area, Yield, and Production

Country / Region	Area (Million hectares)				Yield (Metric tons per hectare)				Production (Million metric tons)				Change in Production			
	2017/18	Prel.	2019/20 Proj.		2017/18	Prel.	2019/20 Proj.		2017/18	Prel.	2019/20 Proj.		From last month		From last year	
		2018/19	Jul	Aug		2018/19	Jul	Aug		2018/19	Jul	Aug	MMT	Percent	MMT	Percent
World	218.28	215.33	218.71	218.78	3.49	3.39	3.53	3.51	761.87	730.55	771.46	768.07	-3.39	-0.44	37.53	5.14
United States	15.20	16.03	15.54	15.54	3.12	3.20	3.36	3.47	47.38	51.29	52.28	53.89	1.61	3.08	2.61	5.08
Total Foreign	203.09	199.31	203.17	203.24	3.52	3.41	3.54	3.51	714.49	679.26	719.18	714.18	-5.00	-0.70	34.92	5.14
European Union - 28	26.16	25.59	26.45	26.15	5.78	5.35	5.72	5.74	151.13	136.86	151.30	150.00	-1.30	-0.86	13.14	9.60
China	24.51	24.27	24.10	24.10	5.48	5.42	5.48	5.48	134.33	131.43	132.00	132.00	0.00	0.00	0.57	0.43
South Asia																
India	30.79	29.65	29.85	29.85	3.20	3.37	3.39	3.39	98.51	99.87	101.20	101.20	0.00	0.00	1.33	1.33
Pakistan	9.05	8.80	8.80	8.80	2.94	2.85	2.91	2.91	26.60	25.10	25.60	25.60	0.00	0.00	0.50	1.99
Afghanistan	2.10	2.00	2.30	2.30	2.00	1.80	2.17	2.17	4.20	3.60	5.00	5.00	0.00	0.00	1.40	38.89
Nepal	0.77	0.76	0.76	0.76	2.31	2.35	2.35	2.35	1.78	1.79	1.79	1.79	0.00	0.00	0.00	0.00
Former Soviet Union - 12																
Russia	27.37	26.34	26.30	27.00	3.11	2.72	2.82	2.70	85.17	71.69	74.20	73.00	-1.20	-1.62	1.32	1.83
Russia Winter	14.67	14.91	14.80	15.20	4.17	3.52	3.72	3.55	61.15	52.47	55.00	54.00	-1.00	-1.82	1.53	2.92
Russia Spring	12.71	11.44	11.50	11.80	1.89	1.68	1.67	1.61	24.01	19.22	19.20	19.00	-0.20	-1.04	-0.22	-1.12
Ukraine	6.64	6.72	7.00	7.05	4.06	3.73	4.14	4.14	26.98	25.06	29.00	29.20	0.20	0.69	4.14	16.53
Kazakhstan	11.91	11.35	11.40	11.40	1.24	1.23	1.23	1.14	14.80	13.95	14.00	13.00	-1.00	-7.14	-0.95	-6.79
Uzbekistan	1.44	1.40	1.40	1.40	4.79	4.29	4.86	4.86	6.90	6.00	6.80	6.80	0.00	0.00	0.80	13.33
Belarus	0.72	0.66	0.75	0.75	3.65	2.75	3.83	3.83	2.62	1.82	2.88	2.88	0.00	0.00	1.06	58.40
Canada	8.98	9.90	9.70	9.70	3.34	3.21	3.43	3.43	29.98	31.80	33.30	33.30	0.00	0.00	1.50	4.72
South America																
Argentina	5.80	6.05	6.20	6.30	3.19	3.22	3.23	3.25	18.50	19.50	20.00	20.50	0.50	2.50	1.00	5.13
Brazil	1.92	2.04	2.10	2.10	2.23	2.66	2.52	2.52	4.26	5.43	5.30	5.30	0.00	0.00	-0.13	-2.36
Uruguay	0.19	0.20	0.23	0.23	2.28	3.68	3.30	3.30	0.44	0.73	0.76	0.76	0.00	0.00	0.03	4.40
Australia	10.92	10.16	11.00	11.00	1.92	1.70	1.91	1.91	20.94	17.30	21.00	21.00	0.00	0.00	3.70	21.40
Africa																
Egypt	1.32	1.32	1.37	1.37	6.40	6.40	6.40	6.40	8.45	8.45	8.77	8.77	0.00	0.00	0.32	3.79
Morocco	3.32	2.85	2.75	2.75	2.14	2.58	1.60	1.60	7.09	7.34	4.40	4.40	0.00	0.00	-2.94	-40.05
Ethiopia	1.72	1.70	1.70	1.70	2.81	2.65	2.71	2.71	4.83	4.50	4.60	4.60	0.00	0.00	0.10	2.22
Algeria	1.60	2.07	2.10	2.10	1.50	1.90	1.90	1.90	2.40	3.94	4.00	4.00	0.00	0.00	0.06	1.52
Middle East																
Turkey	7.80	7.62	7.70	7.20	2.69	2.50	2.73	2.64	21.00	19.00	21.00	19.00	-2.00	-9.52	0.00	0.00
Iran	6.70	6.70	6.70	6.70	2.09	2.16	2.51	2.51	14.00	14.50	16.80	16.80	0.00	0.00	2.30	15.86
Iraq	2.20	1.70	2.40	2.40	1.82	1.76	2.00	2.00	4.00	3.00	4.80	4.80	0.00	0.00	1.80	60.00
Syria	1.10	1.10	1.60	1.60	2.00	1.82	3.00	3.00	2.20	2.00	4.80	4.80	0.00	0.00	2.80	140.00
Mexico	0.67	0.54	0.61	0.61	5.24	5.56	5.25	5.25	3.49	3.00	3.20	3.20	0.00	0.00	0.20	6.67
Serbia	0.54	0.68	0.60	0.60	4.26	5.04	4.83	4.83	2.30	3.40	2.90	2.90	0.00	0.00	-0.50	-14.71
Others	6.86	7.14	7.30	7.32	2.56	2.55	2.71	2.68	17.57	18.22	19.79	19.59	-0.20	-1.01	1.37	7.52

Table 03 Total Coarse Grain Area, Yield, and Production

Country / Region	Area (Million hectares)				Yield (Metric tons per hectare)				Production (Million metric tons)				Change in Production			
	2017/18	Prel.	2019/20 Proj.		2017/18	Prel.	2019/20 Proj.		2017/18	Prel.	2019/20 Proj.		From last month		From last year	
		2018/19	Jul	Aug		2018/19	Jul	Aug		2018/19	Jul	Aug	MMT	Percent	MMT	Percent
World	328.98	326.95	333.05	332.03	4.13	4.27	4.19	4.21	1,359.87	1,396.26	1,395.51	1,398.85	3.34	0.24	2.59	0.19
United States	36.76	36.39	37.12	36.56	10.46	10.44	9.84	10.04	384.39	379.92	365.13	366.93	1.80	0.49	-12.99	-3.42
Total Foreign	292.21	290.56	295.93	295.47	3.34	3.50	3.48	3.49	975.48	1,016.34	1,030.37	1,031.92	1.55	0.15	15.58	1.53
China	44.85	44.67	43.65	43.65	5.95	5.94	6.01	6.01	266.82	265.41	262.48	262.48	0.00	0.00	-2.93	-1.10
European Union	28.97	29.23	29.87	29.75	5.25	5.06	5.24	5.28	152.12	147.90	156.53	156.99	0.47	0.30	9.10	6.15
South America																
Brazil	17.83	18.73	19.41	19.42	4.77	5.57	5.38	5.38	85.06	104.31	104.46	104.48	0.03	0.02	0.18	0.17
Argentina	7.10	8.10	7.98	8.18	5.54	7.31	7.18	7.10	39.32	59.18	57.26	58.06	0.80	1.40	-1.13	-1.90
Former Soviet Union - 12																
Russia	14.59	14.03	14.55	14.28	2.86	2.50	2.67	2.65	41.72	35.00	38.80	37.88	-0.93	-2.38	2.88	8.22
Ukraine	7.59	7.58	7.77	8.01	4.49	5.87	5.60	5.76	34.07	44.50	43.55	46.15	2.60	5.97	1.65	3.70
Kazakhstan	2.49	2.97	2.95	2.95	1.79	1.76	1.79	1.69	4.45	5.23	5.29	4.99	-0.30	-5.68	-0.25	-4.72
Belarus	1.00	0.97	0.85	0.85	3.30	2.56	3.59	3.59	3.29	2.49	3.05	3.05	0.00	0.00	0.56	22.54
Africa																
Nigeria	14.57	14.30	14.40	14.40	1.33	1.39	1.38	1.38	19.44	19.92	19.90	19.90	0.00	0.00	-0.02	-0.10
South Africa	2.79	2.81	3.12	3.12	4.86	4.32	4.69	4.69	13.55	12.13	14.60	14.60	0.00	0.00	2.47	20.37
Tanzania	5.32	5.35	5.35	5.35	1.22	1.22	1.24	1.24	6.47	6.55	6.65	6.65	0.00	0.00	0.10	1.53
Burkina	3.85	3.85	3.85	3.85	0.97	1.25	1.14	1.14	3.73	4.82	4.40	4.40	0.00	0.00	-0.42	-8.69
Ethiopia	5.49	5.59	5.60	5.60	2.90	2.95	2.91	2.91	15.93	16.50	16.30	16.30	0.00	0.00	-0.20	-1.21
Egypt	1.02	1.07	1.12	1.12	7.09	7.14	7.18	7.18	7.26	7.66	8.06	8.06	0.00	0.00	0.40	5.22
Mali	4.78	4.50	4.50	4.50	1.36	1.54	1.18	1.18	6.51	6.94	5.30	5.30	0.00	0.00	-1.64	-23.58
India	24.17	22.02	24.16	23.66	1.94	1.97	1.92	1.94	46.94	43.35	46.44	45.94	-0.50	-1.08	2.58	5.96
Southeast Asia																
Indonesia	3.65	3.70	3.90	3.90	3.26	3.24	3.41	3.26	11.90	12.00	13.30	12.70	-0.60	-4.51	0.70	5.83
Philippines	2.57	2.50	2.55	2.55	3.11	3.04	3.18	3.18	7.98	7.60	8.10	8.10	0.00	0.00	0.50	6.58
Vietnam	1.04	0.95	1.00	1.00	4.72	4.80	4.85	4.85	4.91	4.56	4.85	4.85	0.00	0.00	0.29	6.36
Thailand	1.15	1.26	1.25	1.22	4.39	4.35	4.37	4.31	5.05	5.47	5.45	5.25	-0.20	-3.67	-0.22	-4.02
Mexico	9.07	8.85	9.21	9.21	3.66	3.67	3.59	3.59	33.19	32.50	33.10	33.10	0.00	0.00	0.60	1.85
Canada	4.74	5.00	5.52	5.52	5.54	5.25	5.29	5.29	26.24	26.24	29.21	29.21	0.00	0.00	2.97	11.32
Australia	5.59	5.03	5.74	5.74	2.18	2.17	2.21	2.21	12.19	10.93	12.70	12.70	0.00	0.00	1.76	16.11
Middle East																
Turkey	4.15	4.34	4.53	4.53	2.96	3.05	3.21	3.16	12.27	13.25	14.55	14.30	-0.25	-1.72	1.05	7.92
Iran	1.78	1.73	1.91	1.91	2.43	2.32	2.63	2.63	4.34	4.02	5.02	5.02	0.00	0.00	1.00	24.88
Others	72.07	71.45	71.20	71.22	1.54	1.65	1.56	1.57	110.74	117.89	111.05	111.48	0.43	0.39	-6.41	-5.43

World and Selected Countries and Regions; Coarse Grain includes: Barley, Corn, Millet, Mixed Grains, Oats, Rye and Sorghum

Table 04 Corn Area, Yield, and Production

Country / Region	Area (Million hectares)				Yield (Metric tons per hectare)				Production (Million metric tons)				Change in Production			
	2017/18	Prel.	2019/20 Proj.		2017/18	Prel.	2019/20 Proj.		2017/18	Prel.	2019/20 Proj.		From last month		From last year	
		2018/19	Jul	Aug		2018/19	Jul	Aug		2018/19	Jul	Aug	MMT	Percent	MMT	Percent
World	191.90	191.19	192.69	192.01	5.62	5.87	5.74	5.77	1,077.98	1,123.02	1,105.14	1,108.24	3.10	0.28	-14.79	-1.32
United States	33.48	33.08	33.83	33.19	11.08	11.07	10.42	10.64	371.10	366.29	352.44	353.09	0.65	0.18	-13.19	-3.60
Total Foreign	158.42	158.11	158.86	158.82	4.46	4.79	4.74	4.75	706.88	756.74	752.70	755.15	2.45	0.33	-1.59	-0.21
China	42.40	42.13	41.00	41.00	6.11	6.11	6.20	6.20	259.07	257.33	254.00	254.00	0.00	0.00	-3.33	-1.29
South America																
Brazil	16.60	17.50	18.10	18.10	4.94	5.77	5.58	5.58	82.00	101.00	101.00	101.00	0.00	0.00	0.00	0.00
Argentina	5.20	6.00	6.10	6.10	6.15	8.50	8.20	8.20	32.00	51.00	50.00	50.00	0.00	0.00	-1.00	-1.96
Bolivia	0.37	0.33	0.25	0.25	2.50	2.65	2.50	2.50	0.93	0.88	0.63	0.63	0.00	0.00	-0.25	-28.57
European Union	8.26	8.27	8.70	8.64	7.51	7.77	7.38	7.50	62.02	64.22	64.20	64.80	0.60	0.93	0.58	0.91
Africa																
South Africa	2.63	2.60	2.90	2.90	4.97	4.42	4.83	4.83	13.10	11.50	14.00	14.00	0.00	0.00	2.50	21.74
Nigeria	6.54	6.50	6.50	6.50	1.68	1.69	1.69	1.69	11.00	11.00	11.00	11.00	0.00	0.00	0.00	0.00
Ethiopia	2.23	2.30	2.30	2.30	3.59	3.61	3.48	3.48	8.00	8.30	8.00	8.00	0.00	0.00	-0.30	-3.61
Egypt	0.80	0.85	0.90	0.90	8.00	8.00	8.00	8.00	6.40	6.80	7.20	7.20	0.00	0.00	0.40	5.88
Tanzania	4.20	4.20	4.20	4.20	1.27	1.29	1.31	1.31	5.35	5.40	5.50	5.50	0.00	0.00	0.10	1.85
Malawi	1.73	1.70	1.70	1.70	2.01	1.65	1.94	1.94	3.46	2.80	3.30	3.30	0.00	0.00	0.50	17.86
Zambia	1.43	1.09	0.84	0.84	2.52	2.21	2.38	2.38	3.61	2.40	2.00	2.00	0.00	0.00	-0.40	-16.49
Kenya	2.09	2.20	2.00	2.00	1.52	1.82	1.60	1.60	3.19	4.00	3.20	3.20	0.00	0.00	-0.80	-20.00
Uganda	1.19	1.20	1.20	1.20	2.54	2.33	2.50	2.50	3.02	2.80	3.00	3.00	0.00	0.00	0.20	7.14
Zimbabwe	1.88	1.72	1.62	1.62	1.15	0.99	0.48	0.48	2.16	1.70	0.78	0.78	0.00	0.00	-0.92	-54.32
Former Soviet Union - 12																
Ukraine	4.43	4.57	4.70	4.90	5.44	7.84	7.23	7.45	24.12	35.81	34.00	36.50	2.50	7.35	0.70	1.94
Russia	2.69	2.37	2.60	2.45	4.90	4.81	5.19	5.31	13.20	11.42	13.50	13.00	-0.50	-3.70	1.59	13.89
South Asia																
India	9.38	9.20	9.50	9.50	3.07	3.02	3.05	3.05	28.75	27.80	29.00	29.00	0.00	0.00	1.20	4.32
Pakistan	1.23	1.32	1.33	1.33	4.63	4.62	4.59	4.59	5.70	6.10	6.10	6.10	0.00	0.00	0.00	0.00
Nepal	0.90	0.90	0.90	0.90	2.84	2.83	2.83	2.83	2.56	2.55	2.55	2.55	0.00	0.00	0.00	0.00
Southeast Asia																
Indonesia	3.65	3.70	3.90	3.90	3.26	3.24	3.41	3.26	11.90	12.00	13.30	12.70	-0.60	-4.51	0.70	5.83
Philippines	2.57	2.50	2.55	2.55	3.11	3.04	3.18	3.18	7.98	7.60	8.10	8.10	0.00	0.00	0.50	6.58
Vietnam	1.04	0.95	1.00	1.00	4.72	4.80	4.85	4.85	4.91	4.56	4.85	4.85	0.00	0.00	0.29	6.36
Thailand	1.12	1.23	1.22	1.19	4.45	4.41	4.43	4.37	5.00	5.42	5.40	5.20	-0.20	-3.70	-0.22	-4.06
Mexico	7.32	7.10	7.30	7.30	3.77	3.76	3.70	3.70	27.57	26.70	27.00	27.00	0.00	0.00	0.30	1.12
Canada	1.41	1.43	1.40	1.40	10.02	9.72	10.00	10.00	14.10	13.90	14.00	14.00	0.00	0.00	0.10	0.72
Turkey	0.53	0.53	0.52	0.52	10.00	10.75	10.58	11.06	5.30	5.70	5.50	5.75	0.25	4.55	0.05	0.88
Others	24.60	23.72	23.63	23.63	2.46	2.78	2.61	2.62	60.51	66.07	61.59	61.99	0.40	0.65	-4.08	-6.17

World and Selected Countries and Regions

Table 05 Barley Area, Yield, and Production

Country / Region	Area (Million hectares)				Yield (Metric tons per hectare)				Production (Million metric tons)				Change in Production						
	2017/18	Prel.		2019/20 Proj.		2017/18	Prel.		2019/20 Proj.		2017/18	Prel.		2019/20 Proj.		From last month		From last year	
		2018/19	Jul	Aug	2018/19		Jul	Aug	2018/19	Jul		Aug	MMT	Percent	MMT	Percent			
World	47.48	48.27	50.66	51.27	3.03	2.89	3.00	2.97	143.84	139.54	151.87	152.29	0.42	0.28	12.75	9.14			
United States	0.79	0.80	0.94	0.94	3.93	4.17	3.94	3.97	3.12	3.33	3.72	3.75	0.03	0.75	0.42	12.45			
Total Foreign	46.69	47.47	49.71	50.33	3.01	2.87	2.98	2.95	140.72	136.20	148.15	148.54	0.40	0.27	12.34	9.06			
European Union	12.10	12.32	12.45	12.40	4.85	4.53	4.88	4.86	58.65	55.85	60.70	60.30	-0.40	-0.66	4.45	7.97			
Former Soviet Union - 12																			
Russia	7.71	7.78	7.85	8.25	2.62	2.15	2.28	2.24	20.21	16.74	17.90	18.50	0.60	3.35	1.76	10.53			
Ukraine	2.65	2.57	2.65	2.70	3.28	2.96	3.21	3.20	8.70	7.60	8.50	8.65	0.15	1.76	1.05	13.76			
Kazakhstan	2.07	2.52	2.50	2.50	1.60	1.58	1.60	1.48	3.31	3.97	4.00	3.70	-0.30	-7.50	-0.27	-6.82			
Belarus	0.45	0.43	0.40	0.40	3.14	2.20	3.50	3.50	1.42	0.94	1.40	1.40	0.00	0.00	0.46	48.31			
Azerbaijan	0.32	0.32	0.32	0.32	2.55	2.72	2.72	2.72	0.82	0.87	0.87	0.87	0.00	0.00	0.00	0.00			
Canada	2.11	2.40	2.70	2.70	3.73	3.50	3.78	3.78	7.89	8.40	10.20	10.20	0.00	0.00	1.80	21.43			
Australia	4.12	3.72	4.20	4.20	2.24	2.23	2.19	2.19	9.25	8.31	9.20	9.20	0.00	0.00	0.89	10.71			
Middle East																			
Turkey	3.40	3.60	3.80	3.80	1.88	1.94	2.24	2.11	6.40	7.00	8.50	8.00	-0.50	-5.88	1.00	14.29			
Iran	1.60	1.55	1.70	1.70	1.94	1.81	2.12	2.12	3.10	2.80	3.60	3.60	0.00	0.00	0.80	28.57			
Iraq	0.78	0.60	1.20	1.20	1.26	1.30	1.33	1.33	0.98	0.78	1.60	1.60	0.00	0.00	0.82	105.13			
Syria	0.80	0.80	1.20	1.20	0.97	0.50	1.00	1.00	0.78	0.40	1.20	1.20	0.00	0.00	0.80	200.00			
Africa																			
Ethiopia	0.96	1.00	1.00	1.00	2.13	2.20	2.30	2.30	2.03	2.20	2.30	2.30	0.00	0.00	0.10	4.55			
Morocco	1.89	1.60	1.45	1.45	1.30	1.82	0.69	0.69	2.47	2.91	1.00	1.00	0.00	0.00	-1.91	-65.64			
Algeria	0.76	1.03	1.03	1.03	1.27	1.90	2.00	2.00	0.97	1.95	2.05	2.05	0.00	0.00	0.10	5.13			
Tunisia	0.39	0.31	0.40	0.40	1.02	0.99	1.63	1.63	0.40	0.31	0.65	0.65	0.00	0.00	0.34	109.68			
South Africa	0.09	0.12	0.12	0.12	3.37	3.55	3.54	3.54	0.31	0.42	0.43	0.43	0.00	0.00	0.00	0.71			
South America																			
Argentina	0.94	1.20	1.00	1.20	4.00	4.22	4.00	4.00	3.74	5.06	4.00	4.80	0.80	20.00	-0.26	-5.14			
Uruguay	0.15	0.15	0.15	0.17	2.52	3.83	3.75	3.82	0.39	0.58	0.57	0.63	0.06	10.53	0.06	9.57			
Brazil	0.11	0.11	0.11	0.12	2.61	3.16	2.99	3.02	0.28	0.35	0.34	0.35	0.02	4.48	0.00	-1.13			
India	0.66	0.66	0.66	0.66	2.66	2.69	2.62	2.62	1.75	1.78	1.74	1.74	0.00	0.00	-0.05	-2.58			
China	0.43	0.45	0.47	0.47	4.19	4.11	4.15	4.15	1.80	1.85	1.95	1.95	0.00	0.00	0.10	5.41			
Mexico	0.36	0.35	0.36	0.36	2.81	2.82	2.81	2.81	1.01	1.00	1.01	1.01	0.00	0.00	0.01	1.41			
Afghanistan	0.07	0.06	0.18	0.18	1.40	0.95	1.39	1.39	0.10	0.06	0.25	0.25	0.00	0.00	0.19	338.60			
Others	1.77	1.83	1.81	1.81	2.26	2.23	2.32	2.30	4.00	4.07	4.20	4.17	-0.03	-0.71	0.10	2.36			

World and Selected Countries and Regions

Table 06 Oats Area, Yield, and Production

Country / Region	Area (Million hectares)				Yield (Metric tons per hectare)				Production (Million metric tons)				Change in Production			
	2017/18	Prel.	2019/20 Proj.		2017/18	Prel.	2019/20 Proj.		2017/18	Prel.	2019/20 Proj.		From last month		From last year	
		2018/19	Jul	Aug		2018/19	Jul	Aug		2018/19	Jul	Aug	MMT	Percent	MMT	Percent
World	9.87	9.70	10.12	9.65	2.40	2.26	2.45	2.48	23.70	21.97	24.75	23.89	-0.85	-3.45	1.93	8.78
United States	0.33	0.35	0.37	0.37	2.22	2.33	2.43	2.38	0.72	0.82	0.90	0.88	-0.02	-2.12	0.06	7.48
Total Foreign	9.54	9.35	9.75	9.28	2.41	2.26	2.45	2.48	22.98	21.15	23.85	23.02	-0.84	-3.50	1.87	8.83
European Union	2.67	2.71	2.67	2.60	3.02	2.85	3.11	3.14	8.06	7.72	8.30	8.18	-0.13	-1.51	0.46	5.96
Former Soviet Union - 12																
Russia	2.78	2.73	2.80	2.40	1.96	1.73	1.79	1.79	5.45	4.72	5.00	4.30	-0.70	-14.00	-0.42	-8.80
Ukraine	0.21	0.20	0.19	0.18	2.31	2.14	2.37	2.39	0.48	0.42	0.45	0.43	-0.02	-4.44	0.01	1.65
Belarus	0.15	0.15	0.15	0.15	3.33	2.26	3.00	3.00	0.50	0.34	0.45	0.45	0.00	0.00	0.11	31.58
Kazakhstan	0.21	0.24	0.23	0.23	1.34	1.43	1.47	1.47	0.29	0.34	0.33	0.33	0.00	0.00	-0.01	-1.79
Canada	1.05	1.00	1.20	1.20	3.55	3.45	3.63	3.63	3.73	3.45	4.35	4.35	0.00	0.00	0.90	26.09
South America																
Argentina	0.22	0.22	0.25	0.25	2.24	2.40	2.60	2.60	0.49	0.52	0.65	0.65	0.00	0.00	0.13	25.97
Brazil	0.34	0.38	0.38	0.38	1.86	2.11	2.17	2.17	0.63	0.80	0.82	0.83	0.01	1.23	0.03	3.77
Chile	0.11	0.09	0.10	0.10	5.31	5.09	5.50	5.50	0.57	0.47	0.55	0.55	0.00	0.00	0.08	16.28
Uruguay	0.03	0.03	0.01	0.01	1.52	2.04	1.86	1.86	0.04	0.05	0.03	0.03	0.00	0.00	-0.03	-50.94
Oceania																
Australia	0.87	0.68	0.80	0.80	1.40	1.31	1.63	1.63	1.23	0.89	1.30	1.30	0.00	0.00	0.41	46.40
New Zealand	0.01	0.01	0.01	0.01	5.83	5.00	5.50	5.50	0.04	0.03	0.03	0.03	0.00	0.00	0.01	32.00
China	0.48	0.50	0.53	0.53	1.16	1.15	1.19	1.19	0.55	0.58	0.63	0.63	0.00	0.00	0.05	8.70
Africa																
Algeria	0.09	0.09	0.09	0.09	1.29	1.29	1.29	1.29	0.11	0.11	0.11	0.11	0.00	0.00	0.00	0.00
Morocco	0.03	0.05	0.05	0.05	1.17	1.40	0.89	0.89	0.04	0.06	0.04	0.04	0.00	0.00	-0.02	-36.51
South Africa	0.02	0.02	0.03	0.03	1.53	1.65	1.60	1.60	0.02	0.03	0.04	0.04	0.00	0.00	0.01	21.21
Other Europe																
Norway	0.07	0.07	0.07	0.07	4.16	2.09	4.29	4.29	0.28	0.14	0.30	0.30	0.00	0.00	0.16	108.33
Serbia	0.03	0.03	0.03	0.03	2.17	2.17	2.17	2.17	0.07	0.07	0.07	0.07	0.00	0.00	0.00	0.00
Albania	0.02	0.01	0.01	0.01	2.27	2.08	2.14	2.14	0.03	0.03	0.03	0.03	0.00	0.00	0.00	11.11
Bosnia and Herzegovina	0.01	0.01	0.01	0.01	2.73	2.79	3.00	3.00	0.03	0.04	0.04	0.04	0.00	0.00	0.00	7.69
Turkey	0.11	0.10	0.10	0.10	2.21	2.30	2.30	2.30	0.25	0.23	0.23	0.23	0.00	0.00	0.00	0.00
Mexico	0.04	0.05	0.05	0.05	1.64	2.06	1.80	1.80	0.07	0.10	0.09	0.09	0.00	0.00	-0.01	-12.62
Others	0.01	0.02	0.01	0.01	1.79	2.00	1.86	1.86	0.03	0.03	0.03	0.03	0.00	0.00	0.00	-13.33

World and Selected Countries and Regions

Table 07 Rye Area, Yield, and Production

Country / Region	Area (Million hectares)				Yield (Metric tons per hectare)				Production (Million metric tons)				Change in Production			
	2017/18	Prel.	2019/20 Proj.		2017/18	Prel.	2019/20 Proj.		2017/18	Prel.	2019/20 Proj.		From last month		From last year	
		2018/19	Jul	Aug		2018/19	Jul	Aug		2018/19	Jul	Aug	MMT	Percent	MMT	Percent
World	4.02	3.73	3.79	3.62	3.06	2.68	3.11	3.11	12.31	10.00	11.78	11.28	-0.50	-4.25	1.27	12.70
United States	0.12	0.11	0.12	0.12	2.15	1.95	1.89	1.89	0.26	0.21	0.23	0.23	0.00	0.00	0.02	7.01
Total Foreign	3.90	3.62	3.67	3.50	3.09	2.70	3.15	3.15	12.05	9.79	11.55	11.05	-0.50	-4.33	1.26	12.83
European Union	1.93	1.92	1.95	1.96	3.83	3.23	3.90	3.83	7.41	6.20	7.60	7.50	-0.10	-1.32	1.30	20.97
Former Soviet Union - 12																
Russia	1.17	0.96	1.00	0.83	2.17	2.00	2.00	1.94	2.54	1.91	2.00	1.60	-0.40	-20.00	-0.31	-16.41
Belarus	0.26	0.25	0.20	0.20	2.62	2.00	3.25	3.25	0.67	0.50	0.65	0.65	0.00	0.00	0.15	29.22
Ukraine	0.17	0.15	0.11	0.11	2.97	2.66	2.73	2.73	0.51	0.40	0.30	0.30	0.00	0.00	-0.10	-24.24
Kazakhstan	0.03	0.02	0.03	0.03	1.26	1.05	1.20	1.20	0.04	0.02	0.03	0.03	0.00	0.00	0.01	30.43
Turkey	0.10	0.11	0.11	0.11	3.17	2.91	2.91	2.91	0.32	0.32	0.32	0.32	0.00	0.00	0.00	0.00
Canada	0.10	0.08	0.13	0.13	3.39	2.97	3.08	3.08	0.34	0.24	0.40	0.40	0.00	0.00	0.17	70.21
South America																
Chile	0.00	0.00	0.00	0.00	5.00	5.00	5.00	5.00	0.01	0.01	0.01	0.01	0.00	0.00	0.00	0.00
Argentina	0.05	0.05	0.05	0.05	1.91	2.08	2.10	2.10	0.09	0.10	0.11	0.11	0.00	0.00	0.01	5.00
Other Europe																
Bosnia and Herzegovina	0.00	0.00	0.00	0.00	3.67	2.75	3.50	3.50	0.01	0.01	0.01	0.01	0.00	0.00	0.00	27.27
Switzerland	0.00	0.00	0.00	0.00	5.50	5.50	5.50	5.50	0.01	0.01	0.01	0.01	0.00	0.00	0.00	0.00
Serbia	0.00	0.00	0.00	0.00	2.50	2.50	2.50	2.50	0.01	0.01	0.01	0.01	0.00	0.00	0.00	0.00
Australia	0.04	0.04	0.04	0.04	0.75	0.68	0.68	0.68	0.03	0.03	0.03	0.03	0.00	0.00	0.00	0.00
Others	0.04	0.03	0.04	0.04	1.84	1.00	1.87	1.87	0.07	0.03	0.07	0.07	0.00	0.00	0.04	121.88

World and Selected Countries and Regions

Table 08 Sorghum Area, Yield, and Production

Country / Region	Area (Million hectares)				Yield (Metric tons per hectare)				Production (Million metric tons)				Change in Production			
	Prel.		2019/20 Proj.		Prel.		2019/20 Proj.		Prel.		2019/20 Proj.		From last month		From last year	
	2017/18	2018/19	Jul	Aug	2017/18	2018/19	Jul	Aug	2017/18	2018/19	Jul	Aug	MMT	Percent	MMT	Percent
World	40.45	39.93	41.10	41.18	1.44	1.49	1.42	1.44	58.43	59.35	58.33	59.48	1.15	1.97	0.13	0.21
United States	2.04	2.05	1.86	1.94	4.50	4.53	4.23	4.64	9.19	9.27	7.85	8.99	1.14	14.49	-0.29	-3.07
Total Foreign	38.41	37.88	39.25	39.24	1.28	1.32	1.29	1.29	49.23	50.08	50.48	50.49	0.01	0.02	0.41	0.82
Africa																
Nigeria	5.82	5.80	5.90	5.90	1.19	1.17	1.17	1.17	6.94	6.80	6.90	6.90	0.00	0.00	0.10	1.47
Ethiopia	1.84	1.84	1.85	1.85	2.62	2.72	2.70	2.70	4.82	5.00	5.00	5.00	0.00	0.00	0.00	0.00
Sudan	6.30	7.00	7.00	7.00	0.59	0.64	0.57	0.57	3.74	4.50	4.00	4.00	0.00	0.00	-0.50	-11.11
Burkina	1.67	1.80	1.80	1.80	0.82	1.07	1.00	1.00	1.37	1.93	1.80	1.80	0.00	0.00	-0.13	-6.74
Mali	1.39	1.50	1.50	1.50	1.03	0.98	0.87	0.87	1.42	1.47	1.30	1.30	0.00	0.00	-0.17	-11.56
Niger	3.82	3.70	3.70	3.70	0.51	0.57	0.49	0.49	1.95	2.10	1.80	1.80	0.00	0.00	-0.30	-14.29
Cameroon	0.85	0.85	0.85	0.85	1.59	1.65	1.65	1.65	1.35	1.40	1.40	1.40	0.00	0.00	0.00	0.00
Tanzania	0.78	0.80	0.80	0.80	1.02	1.00	1.00	1.00	0.80	0.80	0.80	0.80	0.00	0.00	0.00	0.00
Egypt	0.14	0.14	0.14	0.14	5.36	5.36	5.36	5.36	0.75	0.75	0.75	0.75	0.00	0.00	0.00	0.00
Uganda	0.42	0.35	0.35	0.35	0.75	0.97	0.97	0.97	0.32	0.34	0.34	0.34	0.00	0.00	0.00	0.00
Ghana	0.25	0.25	0.25	0.25	1.11	1.26	1.12	1.12	0.28	0.32	0.28	0.28	0.00	0.00	-0.04	-11.39
Mozambique	0.21	0.20	0.20	0.20	1.19	1.32	0.90	0.90	0.25	0.26	0.18	0.18	0.00	0.00	-0.08	-31.56
South Africa	0.03	0.05	0.05	0.05	3.97	3.40	2.60	2.60	0.12	0.17	0.13	0.13	0.00	0.00	-0.04	-23.53
Mexico	1.35	1.35	1.50	1.50	3.37	3.48	3.33	3.33	4.55	4.70	5.00	5.00	0.00	0.00	0.30	6.38
South America																
Argentina	0.70	0.63	0.58	0.58	4.29	3.97	4.35	4.35	3.00	2.50	2.50	2.50	0.00	0.00	0.00	0.00
Brazil	0.78	0.74	0.82	0.82	2.73	2.92	2.82	2.82	2.14	2.15	2.30	2.30	0.00	0.00	0.15	6.98
South Asia																
India	5.02	4.01	5.00	5.00	0.96	0.92	0.90	0.90	4.80	3.70	4.50	4.50	0.00	0.00	0.80	21.62
Pakistan	0.26	0.24	0.24	0.24	0.60	0.59	0.58	0.58	0.15	0.14	0.14	0.14	0.00	0.00	0.00	0.00
China	0.68	0.72	0.75	0.75	4.74	4.79	4.80	4.80	3.20	3.45	3.60	3.60	0.00	0.00	0.15	4.35
Australia	0.46	0.50	0.60	0.60	2.72	2.58	2.83	2.83	1.26	1.28	1.70	1.70	0.00	0.00	0.42	33.02
European Union	0.12	0.14	0.13	0.15	5.32	5.51	5.58	5.43	0.66	0.74	0.73	0.82	0.09	12.41	0.07	9.54
Others	5.52	5.28	5.25	5.22	0.98	1.06	1.02	1.01	5.39	5.58	5.34	5.26	-0.08	-1.50	-0.32	-5.77

World and Selected Countries and Regions

Table 09 Rice Area, Yield, and Production
World and Selected Countries and Regions

Country / Region	Area (Million hectares)				Yield (Metric tons per hectare)				Production (Million metric tons)				Change in Production			
	2017/18	Prel.	2019/20 Proj.		2017/18	Prel.	2019/20 Proj.		2017/18	Prel.	2019/20 Proj.		From last month		From last year	
		2018/19	Jul	Aug		2018/19	Jul	Aug		2018/19	Jul	Aug	MMT	Percent	MMT	Percent
World	162.08	163.53	163.11	163.24	4.56	4.55	4.56	4.56	494.86	498.62	497.82	497.86	0.04	0.01	-0.77	-0.15
United States	0.96	1.18	1.10	1.10	8.41	8.62	8.63	8.49	5.66	7.12	6.63	6.52	-0.11	-1.58	-0.60	-8.39
Total Foreign	161.12	162.35	162.01	162.15	4.53	4.52	4.53	4.53	489.20	491.50	491.19	491.34	0.15	0.03	-0.17	-0.03
East Asia																
China	30.75	30.19	30.00	30.00	6.92	7.03	6.95	6.95	148.87	148.49	146.00	146.00	0.00	0.00	-2.49	-1.68
Japan	1.56	1.55	1.55	1.55	6.87	6.78	6.82	6.82	7.79	7.65	7.70	7.70	0.00	0.00	0.05	0.65
Korea, South	0.76	0.74	0.73	0.73	7.01	6.99	7.07	7.07	3.97	3.87	3.88	3.88	0.00	0.00	0.01	0.31
Korea, North	0.48	0.50	0.50	0.50	5.09	4.18	4.18	4.18	1.57	1.36	1.36	1.36	0.00	0.00	0.00	0.00
South Asia																
India	42.90	44.50	44.00	44.00	3.94	3.90	3.92	3.92	112.76	115.63	115.00	115.00	0.00	0.00	-0.63	-0.54
Bangladesh	11.27	11.77	11.83	11.83	4.35	4.46	4.48	4.48	32.65	35.00	35.30	35.30	0.00	0.00	0.30	0.86
Pakistan	2.80	2.88	2.90	2.90	4.02	3.85	3.88	3.88	7.50	7.40	7.50	7.50	0.00	0.00	0.10	1.35
Nepal	1.49	1.50	1.50	1.50	3.34	3.73	3.53	3.53	3.31	3.73	3.53	3.53	0.00	0.00	-0.20	-5.36
Sri Lanka	0.77	1.10	1.00	1.00	4.30	3.96	4.25	4.25	2.25	2.96	2.89	2.89	0.00	0.00	-0.07	-2.36
Southeast Asia																
Indonesia	12.25	12.10	12.25	12.25	4.76	4.78	4.81	4.81	37.00	36.70	37.40	37.40	0.00	0.00	0.70	1.91
Vietnam	7.65	7.67	7.50	7.67	5.79	5.83	5.97	5.91	27.66	27.92	28.00	28.30	0.30	1.07	0.38	1.35
Thailand	10.76	10.90	11.01	10.90	2.90	2.86	2.88	2.85	20.58	20.55	20.90	20.50	-0.40	-1.91	-0.05	-0.24
Burma	7.10	7.10	7.10	7.10	2.90	2.90	2.93	2.93	13.20	13.18	13.30	13.30	0.00	0.00	0.13	0.95
Philippines	4.84	4.74	4.85	4.85	4.01	3.96	3.99	3.99	12.24	11.80	12.20	12.20	0.00	0.00	0.40	3.39
Cambodia	3.18	3.19	3.19	3.19	2.86	2.89	2.92	2.92	5.55	5.63	5.69	5.69	0.00	0.00	0.06	0.98
Laos	0.96	0.82	0.99	0.99	3.30	3.25	3.30	3.30	2.00	1.68	2.05	2.05	0.00	0.00	0.37	22.02
Malaysia	0.70	0.70	0.70	0.70	4.03	4.01	4.01	4.01	1.82	1.83	1.83	1.83	0.00	0.00	0.00	0.00
South America																
Brazil	1.97	1.72	1.70	1.70	6.12	6.25	6.24	6.24	8.20	7.31	7.21	7.21	0.00	0.00	-0.10	-1.40
Peru	0.42	0.44	0.44	0.44	7.20	7.16	7.33	7.33	2.10	2.15	2.20	2.20	0.00	0.00	0.05	2.33
Africa																
Egypt	0.76	0.46	0.50	0.50	8.18	8.78	8.84	8.84	4.30	2.80	3.05	3.05	0.00	0.00	0.25	8.93
Madagascar	1.43	1.50	1.50	1.50	2.18	2.67	2.80	2.80	1.98	2.56	2.69	2.69	0.00	0.00	0.13	5.00
Nigeria	3.60	3.60	3.60	3.60	2.06	2.11	2.16	2.16	4.66	4.79	4.90	4.90	0.00	0.00	0.11	2.34
European Union	0.43	0.41	0.42	0.42	6.71	6.76	6.97	6.89	2.01	1.94	2.04	2.01	-0.03	-1.67	0.07	3.45
Iran	0.57	0.58	0.58	0.58	5.33	5.25	5.25	5.25	2.01	1.99	1.99	1.99	0.00	0.00	0.00	0.00
Others	11.73	11.70	11.68	11.76	3.01	2.94	2.95	2.96	23.22	22.59	22.59	22.87	0.28	1.24	0.28	1.23

Yield is on a rough basis, before the milling process. Production is on a milled basis, after the milling process.

Table 10 Total Oilseed Area, Yield, and Production

World and Selected Countries and Regions

Country / Region	Area (Million hectares)				Yield (Metric tons per hectare)				Production (Million metric tons)				Change in Production			
	Prel.		2019/20 Proj.		Prel.		2019/20 Proj.		Prel.		2019/20 Proj.		From last month		From last year	
	2017/18	2018/19	Jul	Aug	2017/18	2018/19	Jul	Aug	2017/18	2018/19	Jul	Aug	MMT	Percent	MMT	Percent
World Total	--	--	--	--	--	--	--	--	580.67	602.27	586.04	580.86	-5.18	-0.88	-21.41	-3.55
Total Foreign	--	--	--	--	--	--	--	--	449.18	468.42	470.09	469.37	-0.72	-0.15	0.95	0.20
Oilseed, Copra	--	--	--	--	--	--	--	--	5.94	5.98	5.81	5.81	0.00	0.00	-0.17	-2.84
Oilseed, Palm Kernel	--	--	--	--	--	--	--	--	18.76	19.50	20.05	20.05	0.00	0.00	0.56	2.86
Major Oilseeds	247.36	248.25	246.42	244.26	2.25	2.32	2.27	2.27	555.97	576.79	560.18	555.00	-5.18	-0.92	-21.80	-3.78
United States	42.80	41.63	39.01	37.70	3.07	3.22	2.97	2.96	131.48	133.85	115.95	111.49	-4.45	-3.84	-22.36	-16.70
Foreign Oilseeds	204.56	206.62	207.41	206.56	2.08	2.14	2.14	2.15	424.49	442.94	444.23	443.51	-0.72	-0.16	0.56	0.13
South America	61.58	63.25	65.14	65.12	2.97	3.14	3.10	3.10	183.13	198.57	202.10	202.08	-0.02	-0.01	3.51	1.77
Brazil	36.56	37.71	38.69	38.69	3.44	3.23	3.30	3.30	125.68	121.74	127.60	127.60	0.00	0.00	5.86	4.82
Argentina	18.70	19.47	20.03	20.01	2.27	3.16	2.92	2.92	42.52	61.57	58.42	58.40	-0.02	-0.03	-3.17	-5.15
Paraguay	3.47	3.38	3.67	3.67	2.99	2.70	2.81	2.81	10.39	9.12	10.31	10.31	0.00	0.00	1.19	13.08
Bolivia	1.53	1.52	1.58	1.58	1.77	1.83	1.90	1.90	2.71	2.78	3.00	3.00	0.00	0.00	0.22	7.91
Uruguay	1.15	1.02	1.01	1.01	1.23	2.86	2.28	2.28	1.41	2.92	2.30	2.30	0.00	0.00	-0.62	-21.18
China	24.16	24.18	25.00	25.00	2.46	2.48	2.47	2.47	59.49	59.88	61.73	61.73	0.00	0.00	1.85	3.09
South Asia	38.42	38.96	40.08	38.96	1.02	1.02	1.03	1.03	39.02	39.90	41.22	40.04	-1.18	-2.87	0.14	0.34
India	34.96	35.85	36.75	35.63	0.99	1.00	1.00	1.00	34.64	35.73	36.85	35.68	-1.17	-3.17	-0.05	-0.14
Pakistan	3.11	2.75	2.98	2.98	1.27	1.37	1.33	1.32	3.96	3.75	3.96	3.94	-0.02	-0.40	0.19	4.96
European Union	12.44	12.46	11.28	11.21	2.84	2.64	2.82	2.76	35.34	32.93	31.79	31.00	-0.80	-2.50	-1.93	-5.86
Former Soviet Union - 12	24.37	25.48	24.95	25.33	1.66	1.80	1.83	1.84	40.45	45.73	45.56	46.62	1.06	2.33	0.89	1.94
Russia	10.66	12.18	11.95	12.40	1.45	1.54	1.53	1.56	15.48	18.73	18.30	19.40	1.10	6.01	0.67	3.60
Ukraine	9.57	9.23	9.10	9.03	2.07	2.42	2.47	2.49	19.81	22.31	22.50	22.50	0.00	0.00	0.19	0.85
Uzbekistan	1.25	1.10	1.05	1.05	1.21	1.17	1.21	1.14	1.51	1.28	1.27	1.20	-0.07	-5.66	-0.08	-6.47
Canada	12.23	11.68	10.62	10.62	2.38	2.44	2.48	2.48	29.10	28.46	26.35	26.35	0.00	0.00	-2.11	-7.42
Africa	21.35	22.14	21.74	21.73	0.99	1.03	0.95	0.95	21.23	22.77	20.73	20.73	-0.01	-0.04	-2.04	-8.97
Nigeria	4.09	4.09	4.07	4.07	1.31	1.36	1.16	1.16	5.34	5.58	4.70	4.70	0.00	0.00	-0.88	-15.70
South Africa	1.48	1.31	1.51	1.51	1.73	1.46	1.58	1.58	2.55	1.91	2.38	2.38	0.00	0.00	0.47	24.61
Tanzania	1.35	1.50	1.50	1.50	0.89	0.86	0.85	0.85	1.20	1.29	1.28	1.28	0.00	0.00	-0.01	-0.86
Southeast Asia	3.22	3.19	3.15	3.15	1.40	1.39	1.39	1.39	4.52	4.43	4.39	4.39	0.00	0.00	-0.05	-1.08
Indonesia	1.00	0.98	0.95	0.95	1.61	1.57	1.58	1.58	1.62	1.55	1.50	1.50	0.00	0.00	-0.05	-2.91
Burma	1.88	1.88	1.88	1.88	1.19	1.18	1.18	1.18	2.24	2.22	2.21	2.21	0.00	0.00	-0.01	-0.27
Australia	3.76	2.25	2.32	2.32	1.44	1.33	1.41	1.41	5.43	2.98	3.26	3.26	0.00	0.00	0.27	9.15
Turkey	1.25	1.33	1.36	1.36	2.53	2.63	2.40	2.54	3.17	3.49	3.26	3.46	0.20	6.13	-0.02	-0.69
Others	1.77	1.73	1.78	1.77	2.04	2.20	2.16	2.18	3.62	3.80	3.84	3.86	0.02	0.57	0.06	1.66

World Total and Total Foreign: (Major Oilseeds plus copra and palm kernel) Major Oilseeds: (soybeans, sunflowerseeds, peanuts(inshell), cottonseed and rapeseed)

Table 11 Soybean Area, Yield, and Production

Country / Region	Area (Million hectares)				Yield (Metric tons per hectare)				Production (Million metric tons)				Change in Production			
	2017/18	Prel.	2019/20 Proj.		2017/18	Prel.	2019/20 Proj.		2017/18	Prel.	2019/20 Proj.		From last month		From last year	
		2018/19	2018/19	Jul		Aug	2018/19	2018/19		Jul	Aug	2018/19	2018/19	Jul	Aug	MMT
World	124.60	125.36	124.73	122.66	2.74	2.89	2.78	2.79	341.53	362.85	347.04	341.83	-5.21	-1.50	-21.02	-5.79
United States	36.24	35.66	32.08	30.70	3.31	3.47	3.26	3.26	120.07	123.66	104.64	100.16	-4.49	-4.29	-23.51	-19.01
Total Foreign	88.36	89.71	92.65	91.96	2.51	2.67	2.62	2.63	221.47	239.19	242.40	241.68	-0.72	-0.30	2.49	1.04
South America																
Brazil	35.15	35.90	36.90	36.90	3.47	3.26	3.33	3.33	122.00	117.00	123.00	123.00	0.00	0.00	6.00	5.13
Argentina	16.30	17.00	17.50	17.50	2.32	3.29	3.03	3.03	37.80	56.00	53.00	53.00	0.00	0.00	-3.00	-5.36
Paraguay	3.40	3.30	3.60	3.60	3.03	2.73	2.83	2.83	10.30	9.00	10.20	10.20	0.00	0.00	1.20	13.33
Bolivia	1.40	1.40	1.45	1.45	1.86	1.93	2.00	2.00	2.60	2.70	2.90	2.90	0.00	0.00	0.20	7.41
Uruguay	1.10	0.97	0.95	0.95	1.21	2.93	2.32	2.32	1.33	2.83	2.20	2.20	0.00	0.00	-0.63	-22.21
East Asia																
China	8.25	8.40	9.10	9.10	1.84	1.89	1.87	1.87	15.20	15.90	17.00	17.00	0.00	0.00	1.10	6.92
Korea, South	0.05	0.05	0.05	0.05	1.87	1.75	1.80	1.80	0.09	0.09	0.09	0.09	0.00	0.00	0.00	3.37
Korea, North	0.15	0.15	0.15	0.15	1.49	1.50	1.50	1.50	0.22	0.23	0.23	0.23	0.00	0.00	0.00	0.00
Japan	0.15	0.15	0.15	0.15	1.66	1.45	1.69	1.69	0.25	0.21	0.25	0.25	0.00	0.00	0.04	18.78
India	10.40	11.00	11.60	11.00	0.80	1.05	0.94	0.94	8.35	11.50	10.90	10.30	-0.60	-5.50	-1.20	-10.43
Canada	2.94	2.55	2.20	2.20	2.63	2.86	2.82	2.82	7.72	7.30	6.20	6.20	0.00	0.00	-1.10	-15.07
Former Soviet Union - 12																
Russia	2.57	2.74	2.90	2.90	1.41	1.47	1.48	1.48	3.62	4.03	4.30	4.30	0.00	0.00	0.27	6.78
Ukraine	1.98	1.73	1.60	1.55	1.97	2.58	2.38	2.45	3.89	4.46	3.80	3.80	0.00	0.00	-0.66	-14.82
European Union	0.93	0.93	0.95	0.91	2.74	2.88	2.92	2.91	2.54	2.66	2.78	2.65	-0.12	-4.43	-0.01	-0.45
Southeast Asia																
Indonesia	0.42	0.41	0.40	0.40	1.29	1.27	1.28	1.28	0.54	0.52	0.51	0.51	0.00	0.00	-0.01	-1.92
Vietnam	0.06	0.05	0.05	0.05	1.50	1.53	1.52	1.52	0.09	0.08	0.08	0.08	0.00	0.00	-0.01	-6.17
Thailand	0.04	0.04	0.03	0.03	1.57	1.57	1.53	1.53	0.06	0.06	0.05	0.05	0.00	0.00	0.00	-5.45
Burma	0.15	0.15	0.15	0.15	1.07	1.07	1.07	1.07	0.16	0.16	0.16	0.16	0.00	0.00	0.00	0.00
Serbia	0.20	0.22	0.22	0.22	2.30	2.84	2.73	2.73	0.46	0.63	0.60	0.60	0.00	0.00	-0.03	-4.00
Mexico	0.26	0.19	0.24	0.24	1.65	1.75	1.69	1.69	0.43	0.34	0.40	0.40	0.00	0.00	0.07	19.40
Africa																
South Africa	0.79	0.73	0.80	0.80	1.96	1.67	1.81	1.81	1.54	1.22	1.45	1.45	0.00	0.00	0.23	18.85
Nigeria	1.00	1.00	1.00	1.00	0.99	1.05	1.10	1.10	0.99	1.05	1.10	1.10	0.00	0.00	0.05	4.36
Zambia	0.23	0.19	0.20	0.20	1.56	1.58	1.43	1.43	0.35	0.30	0.28	0.28	0.00	0.00	-0.02	-7.26
Uganda	0.05	0.05	0.05	0.05	0.60	0.60	0.60	0.60	0.03	0.03	0.03	0.03	0.00	0.00	0.00	0.00
Middle East																
Iran	0.08	0.07	0.07	0.07	2.41	2.29	2.43	2.43	0.20	0.16	0.17	0.17	0.00	0.00	0.01	6.25
Turkey	0.02	0.03	0.03	0.03	3.75	3.80	3.70	3.70	0.09	0.10	0.10	0.10	0.00	0.00	0.01	5.26
Others	0.32	0.32	0.32	0.32	1.95	1.99	1.97	1.97	0.62	0.64	0.62	0.62	0.00	0.00	-0.02	-3.11

World and Selected Countries and Regions

Table 12 Cottonseed Area, Yield, and Production

Country / Region	Area (Million hectares)				Yield (Metric tons per hectare)				Production (Million metric tons)				Change in Production			
	2017/18	Prel.	2019/20 Proj.		2017/18	Prel.	2019/20 Proj.		2017/18	Prel.	2019/20 Proj.		From last month		From last year	
		2018/19	Jul	Aug		2018/19	Jul	Aug		2018/19	Jul	Aug	MMT	Percent	MMT	Percent
World	33.10	32.78	34.05	34.06	1.36	1.33	1.35	1.34	45.15	43.62	45.96	45.80	-0.16	-0.35	2.18	5.00
United States	4.49	4.13	5.06	5.11	1.30	1.24	1.24	1.24	5.83	5.11	6.26	6.32	0.06	0.93	1.21	23.77
Total Foreign	28.61	28.65	28.99	28.95	1.37	1.34	1.37	1.36	39.33	38.51	39.70	39.48	-0.22	-0.55	0.97	2.52
South Asia																
India	12.60	12.60	12.60	12.60	0.98	0.89	0.98	0.98	12.31	11.25	12.31	12.31	0.00	0.00	1.06	9.43
Pakistan	2.70	2.30	2.50	2.50	1.32	1.43	1.39	1.39	3.55	3.29	3.48	3.47	-0.02	-0.46	0.17	5.29
China	3.40	3.50	3.45	3.45	3.18	3.11	3.15	3.15	10.80	10.88	10.88	10.88	0.00	0.00	0.00	0.00
Former Soviet Union - 12																
Uzbekistan	1.25	1.10	1.05	1.05	1.21	1.17	1.21	1.14	1.51	1.28	1.27	1.20	-0.07	-5.66	-0.08	-6.47
Turkmenistan	0.55	0.55	0.55	0.55	0.96	0.65	0.81	0.73	0.53	0.36	0.44	0.40	-0.04	-9.50	0.04	12.36
Tajikistan	0.19	0.18	0.18	0.18	0.97	0.90	0.98	0.90	0.18	0.16	0.18	0.16	-0.01	-7.95	0.00	0.00
Kazakhstan	0.13	0.13	0.12	0.12	0.94	1.05	1.03	0.94	0.12	0.14	0.12	0.11	-0.01	-8.33	-0.03	-18.52
South America																
Brazil	1.18	1.60	1.55	1.55	2.57	2.63	2.53	2.53	3.02	4.19	3.93	3.93	0.00	0.00	-0.26	-6.25
Argentina	0.32	0.38	0.38	0.36	0.87	1.09	1.02	1.03	0.28	0.41	0.39	0.37	-0.02	-4.64	-0.04	-10.63
Middle East																
Turkey	0.47	0.52	0.54	0.54	2.77	2.60	2.55	2.55	1.30	1.35	1.38	1.38	0.00	0.00	0.03	1.85
Syria	0.03	0.03	0.03	0.03	2.17	2.36	2.40	2.40	0.07	0.06	0.06	0.06	0.00	0.00	0.00	1.69
Iran	0.09	0.08	0.08	0.08	0.96	1.16	1.16	1.16	0.08	0.09	0.09	0.09	0.00	0.00	0.00	0.00
Australia	0.53	0.30	0.26	0.26	2.72	2.40	2.19	2.19	1.44	0.72	0.57	0.57	0.00	0.00	-0.15	-20.94
European Union	0.30	0.31	0.33	0.32	1.65	1.76	1.74	1.72	0.49	0.55	0.57	0.55	-0.02	-4.04	0.00	-0.73
Africa																
Burkina	0.85	0.65	0.73	0.70	0.39	0.36	0.46	0.43	0.33	0.24	0.33	0.30	-0.03	-8.43	0.07	29.36
Mali	0.71	0.70	0.74	0.74	0.56	0.51	0.54	0.54	0.40	0.36	0.40	0.40	0.00	0.00	0.05	13.20
Cameroon	0.23	0.25	0.25	0.25	1.11	1.20	1.13	1.13	0.25	0.30	0.28	0.28	0.00	0.00	-0.02	-6.00
Cote d'Ivoire	0.33	0.39	0.41	0.43	0.66	0.60	0.54	0.57	0.22	0.23	0.22	0.24	0.02	8.56	0.01	2.99
Benin	0.53	0.65	0.68	0.68	0.71	0.71	0.71	0.71	0.38	0.46	0.48	0.48	0.00	0.00	0.02	3.46
Tanzania	0.35	0.50	0.50	0.50	0.29	0.37	0.35	0.35	0.10	0.19	0.18	0.18	0.00	0.00	-0.01	-5.91
Egypt	0.09	0.14	0.10	0.10	1.00	1.08	1.06	1.06	0.09	0.15	0.11	0.11	0.00	0.00	-0.05	-30.26
Nigeria	0.27	0.27	0.27	0.27	0.38	0.38	0.38	0.38	0.10	0.10	0.10	0.10	0.00	0.00	0.00	0.00
Uganda	0.08	0.08	0.08	0.08	1.91	1.40	1.45	1.45	0.15	0.11	0.11	0.11	0.00	0.00	0.00	3.81
Zimbabwe	0.20	0.20	0.20	0.20	0.52	0.38	0.36	0.36	0.10	0.08	0.07	0.07	0.00	0.00	0.00	-5.26
Sudan	0.18	0.18	0.20	0.20	1.35	1.42	1.54	1.54	0.24	0.26	0.31	0.31	0.00	0.00	0.05	20.78
Mexico	0.21	0.24	0.24	0.24	2.52	2.41	2.48	2.47	0.53	0.57	0.59	0.58	-0.01	-2.19	0.01	1.22
Burma	0.25	0.24	0.24	0.24	1.24	1.23	1.20	1.20	0.31	0.30	0.29	0.29	0.00	0.00	-0.01	-2.03
Others	0.63	0.60	0.76	0.76	0.72	0.75	0.74	0.74	0.45	0.45	0.56	0.56	0.00	0.00	0.12	25.67

World and Selected Countries and Regions

Table 13 Peanut Area, Yield, and Production

Country / Region	Area (Million hectares)				Yield (Metric tons per hectare)				Production (Million metric tons)				Change in Production			
	2017/18	Prel.	2019/20 Proj.		2017/18	Prel.	2019/20 Proj.		2017/18	Prel.	2019/20 Proj.		From last month		From last year	
		2018/19	Jul	Aug		2018/19	Jul	Aug		2018/19	Jul	Aug	MMT	Percent	MMT	Percent
World	27.07	27.33	26.78	26.28	1.72	1.69	1.68	1.69	46.58	46.07	44.88	44.31	-0.58	-1.28	-1.77	-3.83
United States	0.72	0.55	0.54	0.54	4.49	4.47	4.54	4.50	3.23	2.48	2.43	2.41	-0.03	-1.07	-0.07	-2.91
Total Foreign	26.36	26.78	26.25	25.75	1.64	1.63	1.62	1.63	43.35	43.59	42.45	41.90	-0.55	-1.30	-1.69	-3.89
China	4.61	4.56	4.60	4.60	3.71	3.73	3.80	3.80	17.09	17.00	17.50	17.50	0.00	0.00	0.50	2.94
Africa																
Nigeria	2.82	2.82	2.80	2.80	1.51	1.57	1.25	1.25	4.25	4.42	3.50	3.50	0.00	0.00	-0.92	-20.85
Sudan	2.22	3.07	2.30	2.30	0.74	0.94	0.78	0.78	1.65	2.88	1.80	1.80	0.00	0.00	-1.08	-37.59
Senegal	1.25	1.25	1.20	1.20	1.13	1.16	0.92	0.92	1.41	1.45	1.10	1.10	0.00	0.00	-0.35	-24.14
Cameroon	0.43	0.43	0.43	0.43	1.40	1.40	1.40	1.40	0.60	0.60	0.60	0.60	0.00	0.00	0.00	0.00
Ghana	0.34	0.34	0.34	0.34	1.28	1.55	1.31	1.31	0.43	0.52	0.44	0.44	0.00	0.00	-0.08	-15.38
Chad	0.77	0.77	0.77	0.77	1.13	1.16	1.10	1.10	0.87	0.89	0.85	0.85	0.00	0.00	-0.04	-4.49
Malawi	0.39	0.37	0.37	0.37	0.99	0.88	0.88	0.88	0.39	0.33	0.33	0.33	0.00	0.00	0.00	0.00
Congo (Kinshasa)	0.50	0.50	0.50	0.50	0.85	0.85	0.85	0.85	0.42	0.42	0.42	0.42	0.00	0.00	0.00	0.00
Niger	0.92	0.93	0.90	0.90	0.50	0.64	0.56	0.56	0.46	0.59	0.50	0.50	0.00	0.00	-0.09	-15.54
Mali	0.39	0.38	0.43	0.43	0.78	1.31	1.00	1.00	0.30	0.49	0.43	0.43	0.00	0.00	-0.07	-13.44
Uganda	0.43	0.43	0.43	0.43	0.71	0.71	0.71	0.71	0.30	0.30	0.30	0.30	0.00	0.00	0.00	0.00
Burkina	0.56	0.56	0.56	0.56	0.60	0.59	0.80	0.80	0.33	0.33	0.45	0.45	0.00	0.00	0.12	36.36
Guinea	0.67	0.68	0.68	0.68	1.04	1.13	1.10	1.10	0.70	0.77	0.75	0.75	0.00	0.00	-0.02	-2.60
Egypt	0.06	0.06	0.06	0.06	3.20	3.20	3.20	3.20	0.21	0.21	0.21	0.21	0.00	0.00	0.00	0.00
Central African Republic	0.10	0.10	0.10	0.10	1.50	1.50	1.50	1.50	0.15	0.15	0.15	0.15	0.00	0.00	0.00	0.00
South Africa	0.06	0.02	0.05	0.05	1.36	1.35	1.50	1.50	0.08	0.03	0.08	0.08	0.00	0.00	0.05	177.78
Mozambique	0.40	0.38	0.38	0.38	0.23	0.34	0.34	0.34	0.09	0.13	0.13	0.13	0.00	0.00	0.00	0.00
Cote d'Ivoire	0.15	0.15	0.15	0.15	1.39	1.45	1.45	1.45	0.20	0.21	0.21	0.21	0.00	0.00	0.00	0.00
Benin	0.16	0.19	0.19	0.19	0.88	1.19	0.92	0.92	0.14	0.23	0.18	0.18	0.00	0.00	-0.05	-22.57
South Asia																
India	4.93	4.70	5.00	4.50	1.35	1.00	1.15	1.16	6.65	4.70	5.75	5.20	-0.55	-9.57	0.50	10.64
Pakistan	0.09	0.10	0.09	0.09	0.97	0.95	0.98	0.98	0.09	0.09	0.09	0.09	0.00	0.00	0.00	1.11
Southeast Asia																
Indonesia	0.58	0.57	0.55	0.55	1.85	1.80	1.80	1.80	1.08	1.03	0.99	0.99	0.00	0.00	-0.04	-3.41
Burma	0.89	0.89	0.89	0.89	1.55	1.55	1.55	1.55	1.38	1.38	1.38	1.38	0.00	0.00	0.00	0.00
Vietnam	0.19	0.19	0.19	0.19	2.37	2.41	2.47	2.47	0.45	0.46	0.47	0.47	0.00	0.00	0.01	2.40
Thailand	0.02	0.02	0.02	0.02	1.67	1.67	1.67	1.67	0.04	0.04	0.04	0.04	0.00	0.00	0.00	0.00
South America																
Argentina	0.38	0.32	0.32	0.32	2.27	4.13	3.75	3.75	0.87	1.32	1.20	1.20	0.00	0.00	-0.12	-8.88
Brazil	0.14	0.15	0.16	0.16	3.71	2.96	3.55	3.55	0.52	0.44	0.55	0.55	0.00	0.00	0.12	26.44
Mexico	0.06	0.06	0.06	0.06	1.70	1.70	1.73	1.73	0.10	0.10	0.10	0.10	0.00	0.00	0.01	5.15
Others	1.88	1.83	1.75	1.75	1.13	1.15	1.13	1.13	2.13	2.12	1.98	1.98	0.00	0.00	-0.14	-6.48

Table 14 Sunflowerseed Area, Yield, and Production

Country / Region	Area (Million hectares)				Yield (Metric tons per hectare)				Production (Million metric tons)				Change in Production			
	2017/18	Prel.		2019/20 Proj.		2017/18	Prel.		2019/20 Proj.		2017/18	Prel.		2019/20 Proj.		
		2018/19	Jul	Aug	2018/19		Jul	Aug	2018/19	Jul		Aug	MMT	Percent	MMT	Percent
World	26.06	26.24	25.88	26.34	1.83	1.96	1.95	2.00	47.79	51.46	50.51	52.58	2.07	4.09	1.12	2.17
United States	0.54	0.50	0.54	0.54	1.80	1.94	1.87	1.87	0.97	0.96	1.00	1.00	0.00	0.00	0.04	4.06
Total Foreign	25.52	25.74	25.34	25.80	1.83	1.96	1.95	2.00	46.82	50.50	49.51	51.58	2.07	4.17	1.08	2.14
Former Soviet Union - 12																
Russia	7.15	7.94	7.60	8.00	1.45	1.60	1.58	1.63	10.36	12.71	12.00	13.00	1.00	8.33	0.29	2.28
Ukraine	6.80	6.50	6.20	6.20	2.01	2.31	2.39	2.50	13.70	15.00	14.80	15.50	0.70	4.73	0.50	3.33
Kazakhstan	0.88	0.85	0.85	0.85	1.02	1.00	1.06	1.06	0.90	0.85	0.90	0.90	0.00	0.00	0.05	6.13
European Union	4.39	4.15	4.25	4.34	2.30	2.32	2.29	2.26	10.13	9.65	9.75	9.80	0.05	0.51	0.15	1.59
South America																
Argentina	1.68	1.75	1.80	1.80	2.11	2.17	2.10	2.10	3.54	3.80	3.78	3.78	0.00	0.00	-0.02	-0.53
Uruguay	0.05	0.06	0.06	0.06	1.56	1.61	1.67	1.67	0.08	0.09	0.10	0.10	0.00	0.00	0.01	11.11
Bolivia	0.13	0.12	0.13	0.13	0.80	0.70	0.77	0.77	0.11	0.08	0.10	0.10	0.00	0.00	0.02	25.00
Brazil	0.10	0.07	0.08	0.08	1.48	1.71	1.50	1.50	0.14	0.11	0.12	0.12	0.00	0.00	0.01	8.11
Paraguay	0.03	0.03	0.03	0.03	1.66	1.69	1.70	1.70	0.05	0.05	0.05	0.05	0.00	0.00	0.00	-5.56
China	1.25	1.25	1.25	1.25	2.50	2.60	2.60	2.60	3.12	3.25	3.25	3.25	0.00	0.00	0.00	0.00
South Asia																
India	0.33	0.35	0.25	0.23	0.70	0.80	0.75	0.76	0.23	0.28	0.19	0.17	-0.02	-9.57	-0.11	-39.29
Pakistan	0.08	0.12	0.14	0.14	1.13	1.20	1.04	1.04	0.09	0.14	0.15	0.15	0.00	0.00	0.00	0.69
Middle East																
Turkey	0.70	0.72	0.73	0.73	2.21	2.52	2.12	2.40	1.55	1.80	1.55	1.75	0.20	12.90	-0.05	-2.78
Iran	0.04	0.04	0.04	0.04	1.08	1.08	1.08	1.08	0.04	0.04	0.04	0.04	0.00	0.00	0.00	0.00
Israel	0.01	0.01	0.01	0.01	1.60	1.60	1.60	1.60	0.02	0.02	0.02	0.02	0.00	0.00	0.00	0.00
Africa																
Egypt	0.01	0.01	0.01	0.01	2.38	2.38	2.38	2.38	0.02	0.02	0.02	0.02	0.00	0.00	0.00	0.00
Morocco	0.02	0.02	0.02	0.02	1.26	1.29	1.25	1.25	0.02	0.03	0.03	0.03	0.00	0.00	0.00	-7.41
South Africa	0.60	0.52	0.61	0.61	1.43	1.18	1.23	1.23	0.86	0.61	0.75	0.75	0.00	0.00	0.14	22.95
Burma	0.60	0.60	0.60	0.60	0.65	0.65	0.65	0.65	0.39	0.39	0.39	0.39	0.00	0.00	0.00	0.00
Canada	0.03	0.03	0.02	0.02	2.23	2.11	2.05	2.05	0.06	0.06	0.05	0.05	0.00	0.00	-0.01	-21.05
Australia	0.01	0.02	0.02	0.02	1.86	1.21	1.25	1.25	0.03	0.02	0.03	0.03	0.00	0.00	0.00	8.70
Others	0.63	0.61	0.64	0.64	2.21	2.48	2.28	2.49	1.38	1.50	1.47	1.60	0.14	9.21	0.10	6.66

World and Selected Countries and Regions

Table 15 Rapeseed Area, Yield, and Production

Country / Region	Area (Million hectares)				Yield (Metric tons per hectare)				Production (Million metric tons)				Change in Production			
	Prel.		2019/20 Proj.		Prel.		2019/20 Proj.		Prel.		2019/20 Proj.		From last month		From last year	
	2017/18	2018/19	Jul	Aug	2017/18	2018/19	Jul	Aug	2017/18	2018/19	Jul	Aug	MMT	Percent	MMT	Percent
World	36.53	36.54	34.98	34.91	2.05	1.99	2.05	2.02	74.92	72.79	71.78	70.48	-1.30	-1.81	-2.31	-3.18
United States	0.81	0.79	0.81	0.81	1.71	2.08	1.99	1.99	1.39	1.64	1.61	1.61	0.00	0.00	-0.04	-2.13
Total Foreign	35.72	35.75	34.17	34.10	2.06	1.99	2.05	2.02	73.53	71.15	70.17	68.87	-1.30	-1.85	-2.28	-3.20
European Union	6.83	7.07	5.75	5.65	3.25	2.84	3.25	3.19	22.18	20.07	18.70	18.00	-0.70	-3.74	-2.07	-10.30
Canada	9.27	9.10	8.40	8.40	2.30	2.32	2.39	2.39	21.33	21.10	20.10	20.10	0.00	0.00	-1.00	-4.74
China	6.65	6.47	6.60	6.60	2.00	1.99	1.98	1.98	13.27	12.85	13.10	13.10	0.00	0.00	0.25	1.95
South Asia																
India	6.70	7.20	7.30	7.30	1.06	1.11	1.05	1.05	7.10	8.00	7.70	7.70	0.00	0.00	-0.30	-3.75
Pakistan	0.24	0.23	0.24	0.24	0.96	0.98	0.98	0.98	0.23	0.23	0.24	0.24	0.00	0.00	0.01	4.44
Bangladesh	0.25	0.25	0.25	0.25	0.92	0.92	0.92	0.92	0.23	0.23	0.23	0.23	0.00	0.00	0.00	0.00
Former Soviet Union - 12																
Russia	0.95	1.50	1.45	1.50	1.58	1.33	1.38	1.40	1.50	1.99	2.00	2.10	0.10	5.00	0.11	5.58
Ukraine	0.79	1.00	1.30	1.28	2.80	2.85	3.00	2.50	2.22	2.85	3.90	3.20	-0.70	-17.95	0.35	12.28
Belarus	0.33	0.35	0.30	0.30	1.81	1.31	1.63	1.63	0.60	0.46	0.49	0.49	0.00	0.00	0.03	7.46
Kazakhstan	0.25	0.37	0.28	0.28	1.11	1.08	1.14	1.14	0.28	0.39	0.32	0.32	0.00	0.00	-0.07	-18.78
Australia	3.17	1.89	2.00	2.00	1.23	1.15	1.30	1.30	3.89	2.18	2.60	2.60	0.00	0.00	0.42	19.27
South America																
Chile	0.06	0.06	0.06	0.06	3.89	4.20	4.25	4.25	0.22	0.25	0.26	0.26	0.00	0.00	0.01	2.82
Paraguay	0.03	0.04	0.03	0.03	1.00	1.50	1.87	1.87	0.03	0.06	0.06	0.06	0.00	0.00	0.00	-6.67
Switzerland	0.02	0.02	0.02	0.02	3.14	3.14	3.14	3.14	0.07	0.07	0.07	0.07	0.00	0.00	0.00	0.00
Ethiopia	0.03	0.04	0.04	0.04	1.82	1.57	1.86	1.86	0.05	0.06	0.07	0.07	0.00	0.00	0.01	18.18
Others	0.15	0.17	0.16	0.16	2.17	2.14	2.22	2.22	0.33	0.37	0.35	0.35	0.00	0.00	-0.03	-6.70

World and Selected Countries and Regions

Table 16 Copra, Palm Kernel, and Palm Oil Production

Country / Region	Production (Million metric tons)				Change in Production			
	2017/18	Prel.	2019/20 Proj.		From last month		From last year	
		2018/19	Jul	Aug	MMT	Percent	MMT	Percent
Oilseed, Copra								
Philippines	2.60	2.63	2.50	2.50	0.00	0.00	-0.13	-4.94
Indonesia	1.65	1.64	1.60	1.60	0.00	0.00	-0.04	-2.44
India	0.75	0.75	0.75	0.75	0.00	0.00	0.00	0.00
Vietnam	0.28	0.29	0.29	0.29	0.00	0.00	0.00	0.00
Mexico	0.21	0.22	0.22	0.22	0.00	0.00	0.00	0.00
Papua New Guinea	0.10	0.10	0.10	0.10	0.00	0.00	0.00	0.00
Thailand	0.07	0.07	0.07	0.07	0.00	0.00	0.00	0.00
Sri Lanka	0.07	0.07	0.07	0.07	0.00	0.00	0.00	0.00
Solomon Islands	0.03	0.03	0.03	0.03	0.00	0.00	0.00	0.00
Cote d'Ivoire	0.03	0.03	0.03	0.03	0.00	0.00	0.00	0.00
World	5.94	5.98	5.81	5.81	0.00	0.00	-0.17	-2.84
Oilseed, Palm Kernel								
Indonesia	10.50	10.90	11.30	11.30	0.00	0.00	0.40	3.67
Malaysia	4.92	5.20	5.30	5.30	0.00	0.00	0.10	1.92
Thailand	0.82	0.87	0.89	0.89	0.00	0.00	0.02	2.30
Nigeria	0.73	0.73	0.73	0.73	0.00	0.00	0.00	0.00
Colombia	0.33	0.33	0.36	0.36	0.00	0.00	0.03	9.09
Guatemala	0.17	0.17	0.17	0.17	0.00	0.00	0.00	0.00
Papua New Guinea	0.17	0.17	0.17	0.17	0.00	0.00	0.00	0.00
Honduras	0.14	0.14	0.14	0.14	0.00	0.00	0.00	0.00
Brazil	0.13	0.14	0.14	0.14	0.00	0.00	0.00	0.00
Cote d'Ivoire	0.12	0.12	0.12	0.12	0.00	0.00	0.00	0.00
World	18.76	19.50	20.05	20.05	0.00	0.00	0.55	2.82
Oil, Palm								
Indonesia	39.50	41.50	43.00	43.00	0.00	0.00	1.50	3.61
Malaysia	19.68	21.00	21.20	21.20	0.00	0.00	0.20	0.95
Thailand	2.78	2.90	3.00	3.00	0.00	0.00	0.10	3.45
Colombia	1.63	1.63	1.68	1.68	0.00	0.00	0.06	3.70
Nigeria	1.03	1.02	1.02	1.02	0.00	0.00	0.00	0.00
Guatemala	0.85	0.85	0.85	0.85	0.00	0.00	0.00	0.00
Papua New Guinea	0.63	0.63	0.63	0.63	0.00	0.00	0.00	0.00
Ecuador	0.57	0.58	0.63	0.63	0.00	0.00	0.05	8.62
Honduras	0.58	0.58	0.58	0.58	0.00	0.00	0.00	0.00
Brazil	0.50	0.53	0.54	0.54	0.00	0.00	0.02	3.85
World	70.61	74.08	76.01	76.01	0.00	0.00	1.93	2.61

World and Selected Countries and Regions

Table 17 Cotton Area, Yield, and Production

Country / Region	Area (Million hectares)				Yield (Kilograms per hectare)				Production (Million 480 lb. bales)				Change in Production			
	2017/18	Prel.	2019/20 Proj.		2017/18	Prel.	2019/20 Proj.		2017/18	Prel.	2019/20 Proj.		From last month		From last year	
		2018/19	Jul	Aug		2018/19	Jul	Aug		2018/19	Jul	Aug	MBales	Percent	MBales	Percent
World	33.73	33.43	34.73	34.74	799	776	789	787	123.78	119.19	125.79	125.61	-0.18	-0.14	6.42	5.38
United States	4.49	4.13	5.06	5.11	1,014	968	947	959	20.92	18.37	22.00	22.52	0.52	2.35	4.15	22.59
Total Foreign	29.24	29.30	29.67	29.62	766	749	762	758	102.86	100.83	103.79	103.09	-0.70	-0.67	2.27	2.25
South Asia																
India	12.60	12.60	12.60	12.60	501	458	501	501	29.00	26.50	29.00	29.00	0.00	0.00	2.50	9.43
Pakistan	2.70	2.30	2.50	2.50	661	719	697	697	8.20	7.60	8.00	8.00	0.00	0.00	0.40	5.26
China	3.40	3.50	3.45	3.45	1,761	1,726	1,751	1,751	27.50	27.75	27.75	27.75	0.00	0.00	0.00	0.00
South America																
Brazil	1.18	1.60	1.55	1.55	1,708	1,747	1,686	1,686	9.22	12.80	12.00	12.00	0.00	0.00	-0.80	-6.25
Argentina	0.32	0.38	0.38	0.36	558	642	602	605	0.82	1.12	1.05	1.00	-0.05	-4.76	-0.12	-10.71
Paraguay	0.01	0.01	0.01	0.01	416	416	416	416	0.02	0.02	0.02	0.02	0.00	0.00	0.00	0.00
Africa																
Burkina	0.85	0.65	0.73	0.70	307	285	360	342	1.20	0.85	1.20	1.10	-0.10	-8.33	0.25	29.41
Mali	0.71	0.70	0.74	0.74	432	392	419	419	1.40	1.26	1.43	1.43	0.00	0.00	0.17	13.10
Cote d'Ivoire	0.33	0.39	0.41	0.43	536	486	441	461	0.81	0.88	0.83	0.90	0.07	8.43	0.03	2.86
Benin	0.53	0.65	0.68	0.68	468	469	468	468	1.14	1.40	1.45	1.45	0.00	0.00	0.05	3.57
Egypt	0.09	0.14	0.10	0.10	718	772	762	762	0.30	0.50	0.35	0.35	0.00	0.00	-0.15	-30.00
Cameroon	0.23	0.25	0.25	0.25	484	523	492	492	0.50	0.60	0.57	0.57	0.00	0.00	-0.04	-5.83
Tanzania	0.35	0.50	0.50	0.50	143	185	174	174	0.23	0.43	0.40	0.40	0.00	0.00	-0.03	-5.88
Nigeria	0.27	0.27	0.27	0.27	190	190	190	190	0.24	0.24	0.24	0.24	0.00	0.00	0.00	0.00
Zimbabwe	0.20	0.20	0.20	0.20	294	218	207	207	0.27	0.20	0.19	0.19	0.00	0.00	-0.01	-5.00
Ethiopia	0.06	0.08	0.08	0.08	639	687	680	680	0.18	0.24	0.25	0.25	0.00	0.00	0.01	2.88
Former Soviet Union - 12																
Uzbekistan	1.25	1.10	1.05	1.05	672	648	674	622	3.86	3.28	3.25	3.00	-0.25	-7.69	-0.28	-8.40
Turkmenistan	0.55	0.55	0.55	0.55	535	364	479	419	1.34	0.91	1.20	1.05	-0.15	-12.50	0.14	15.38
Tajikistan	0.19	0.18	0.18	0.18	671	502	544	484	0.57	0.42	0.45	0.40	-0.05	-11.11	-0.02	-3.61
Kazakhstan	0.13	0.13	0.12	0.12	523	587	642	558	0.30	0.35	0.35	0.30	-0.05	-13.04	-0.05	-13.04
Middle East																
Turkey	0.47	0.52	0.54	0.54	1,853	1,549	1,653	1,653	4.00	3.70	4.10	4.10	0.00	0.00	0.40	10.81
Syria	0.03	0.03	0.03	0.03	1,161	1,219	1,219	1,219	0.16	0.14	0.14	0.14	0.00	0.00	0.00	0.00
Iran	0.09	0.08	0.08	0.08	640	748	748	748	0.25	0.28	0.28	0.28	0.00	0.00	0.00	0.00
Australia	0.53	0.30	0.26	0.26	1,972	1,742	1,591	1,591	4.80	2.40	1.90	1.90	0.00	0.00	-0.50	-20.83
Mexico	0.21	0.24	0.24	0.24	1,617	1,546	1,588	1,575	1.56	1.69	1.75	1.70	-0.05	-2.86	0.01	0.59
Burma	0.25	0.24	0.24	0.24	634	635	635	635	0.73	0.70	0.70	0.70	0.00	0.00	0.00	0.00
Others	1.74	1.73	1.95	1.94	535	580	554	549	4.28	4.60	4.96	4.89	-0.07	-1.41	0.29	6.40

World and Selected Countries and Regions

TABLE 18

The table below presents a record of the August projection and the final Estimate. Using world wheat production as an example, the "root mean square error" means that chances are 2 out of 3 that the current forecast will not be above or below the final estimate by more than 2.3 percent. Chances are 9 out of 10 (90% confidence level) that the difference will not exceed 3.9 percent. The average difference between the August projection and the final estimate is 10.8 million tons, ranging from 0.2 million to 32.1 million tons. The August projection has been below the estimate 26 times and above 12 times.

RELIABILITY OF PRODUCTION PROJECTIONS 1/

COMMODITY AND REGION	Root mean square error	90 percent confidence interval	Difference between forecast and final estimate				
			Average	Smallest	Largest	Years	
						Below final	Above final
	Percent		---Million metric tons---				
WHEAT							
World	2.3	3.9	10.8	0.2	32.1	26	12
U.S.	2.3	3.9	1.1	0.0	4.2	16	22
Foreign	2.6	4.3	10.6	0.6	31.1	26	12
COARSE GRAINS 2/							
World	2.4	4.1	18.6	0.4	53.7	29	9
U.S.	6.1	10.4	9.6	0.0	31.4	24	14
Foreign	2.6	4.3	15.1	0.7	58.4	26	12
RICE (Milled)							
World	2.3	3.9	6.6	0.1	24.4	25	13
U.S.	5.4	9.1	0.3	0.0	0.6	20	18
Foreign	2.4	4.0	6.6	0.4	24.7	26	12
SOYBEANS							
World	4.7	8.0	7.3	0.3	26.7	22	16
U.S.	6.1	10.3	3.3	0.0	11.1	21	16
Foreign	7.6	12.9	6.8	1.1	26.4	19	19
COTTON			---Million 480-lb. bales---				
World	5.0	8.5	3.5	0.0	13.2	21	16
U.S.	7.5	12.8	1.0	0.0	3.9	19	18
Foreign	5.5	9.3	3.1	0.0	10.9	21	16
UNITED STATES			-----Million bushels-----				
CORN	6.6	11.2	358	1	1,079	23	15
SORGHUM	8.0	13.6	33	1	108	20	18
BARLEY	6.2	10.4	15	1	67	14	24
OATS	9.9	16.8	13	1	57	7	31

1/ Marketing years 1981/82 through 2018/19. Final for grains, soybeans and cotton is defined as the first *November* estimates following the marketing year for 1981/82 through 2017/18, and for 2018/19 last month's estimate.

2/ Includes corn, sorghum, barley, oats, rye, millet, and mixed grain

August 2019

Office of Global Analysis, FAS, USDA